

Copper mechanical connectors

Type L – Single conductor, one-hole mount



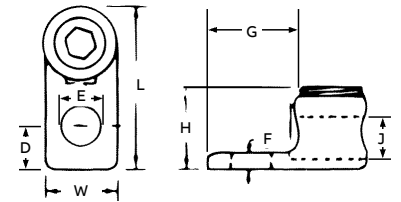
- For copper conductors
- Screws are plated steel
- Compact design
- Add suffix P to catalogue number for tin plating
- One-piece construction for strength and durability
- Excellent for confined quarters

- Cat. nos. L400 and L650 are cast from high strength bronze alloy
- Cat. nos. L35, L70, L125 and L250 are cold forged from pure electrolytic copper
- Other models are cast from high strength bronze alloy
- CSA certified and UL listed



Cat. no.	Conductor range (AWG or kcmil)		Dimensions (in.)									
	Socket	Hex	Max.	Min.	L	W	H	F	D	J	E	G
L35*	-	-	8 str.	14 sol.	13/16	3/8	3/8	3/32	13/64	11/64	13/64	1/2
L70*	-	-	4 str.	14 sol.	1 1/8	17/32	35/64	3/32	9/32	9/32	9/32	21/32
L125BB**	L125H	-	1/0 str.	8 sol.	1 1/2	47/64	3/4	3/32	3/8	27/64	21/64	27/32
L250**	L250H	-	250	6 str.	1 63/64	15/16	1 1/16	1/8	29/64	5/8	13/32	1 3/32
L400-BB**	L400H	-	500	4/0 str.	3	1 13/32	1 15/32	9/32	5/8	7/8	9/16	1 7/8
L650BB**	L650H	-	1000	500	4	2	2 3/16	17/32	3/4	1 1/4	9/16	2

Diagrams



* Sizes L35 and L70 have screwdriver slot head screws only.
 ** Sizes L125 and up are Allen head screws.

Type L – Single conductor, two-hole mount



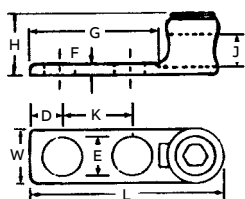
- Cast from high strength bronze alloy
- For use where large contact area is required to provide a more secure mounting

- CSA certified and UL listed



Cat. no.	Conductor range (AWG or kcmil)		Dimensions (in.)										
	Socket	Hex	Max.	Min.	L	W	H	F	D	K	E	G	J
L1252	L1252H	-	1/0 str.	4 str.	2 13/16	25/32	13/16	3/16	7/16	1	11/32	2	27/64
L2502	L2502H	-	250	1/0 str.	3	3	1 1/32	15/64	7/16	1	13/32	17/8	5/8
L4002	L4002H	-	500	4/0 str.	3 3/8	3 3/8	1 15/32	5/16	7/16	1	13/32	1 15/16	57/64
L6502-BB	L6502H	-	1000	500	4 15/16	4 15/16	2	3/8	9/16	1 1/2	9/16	2 3/4	1 1/4

Diagrams



Copper mechanical connectors

Type TL – Two conductors, two-hole mount

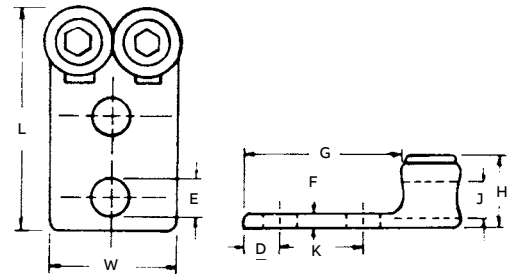


- Conveniently terminates parallel conductors
- For copper conductors
- Screws are plated steel
- Compact design
- Add suffix P to catalogue number for tin plating
- One-piece construction for strength and durability
- Excellent for confined quarters
- CSA certified and UL listed
- Cast from high strength bronze alloy



Cat. no.		Conductor range (AWG or kcmil)		Dimensions (in.)								
Socket	Hex	Max.	Min.	L	W	H	F	K	E	D	G	J
TL250	TL250H	250	1/0 str.	4 ⁵ / ₁₆	1 ⁷ / ₈	9 ³ / ₃₂	5 ¹ / ₈	1 ³ / ₄	9 ¹ / ₁₆	1 ¹ / ₁₆	3 ³ / ₁₆	5 ¹ / ₈
TL400	TL400H	500	4/0 str.	4 ³ / ₄	2 ⁹ / ₁₆	1 ³ / ₃₂	1 ¹ / ₁₆	1 ³ / ₄	9 ¹ / ₁₆	1 ⁹ / ₁₆	3	7 ¹ / ₈
TL650*	TL650H	1000	500	5 ⁹ / ₁₆	3 ³ / ₄	9 ¹ / ₁₆	5 ¹ / ₈	1 ³ / ₄	9 ¹ / ₁₆	2 ³ / ₁₆	3 ³ / ₈	1 ¹ / ₄

Diagrams



*Four hole NEMA tang on TL650.

Type S – Copper end-to-end splice connectors

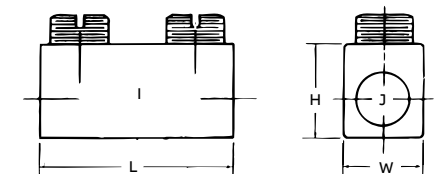


- Cast of high strength bronze alloy
- Plated steel socket head set screws
- For copper conductors
- Compact design
- Add suffix P to catalogue number for tin plating
- One-piece construction for strength and durability
- Excellent for confined quarters
- CSA Certified and UL Listed



Cat. no.		Conductor range (AWG or kcmil)		Dimensions (in.)				
		Max.	Min.	L	W	H	J	I
S100BB		1 str.	4 str.	1 ¹¹ / ₁₆	5 ¹ / ₈	1 ¹ / ₁₆	3 ³ / ₈	1 ⁵ / ₁₆
S225BB*		4 str.	1 str.	2 ³ / ₁₆	2 ⁷ / ₃₂	3 ¹ / ₃₂	9 ¹ / ₁₆	1 ³ / ₁₆
S400BB		500	4/0 str.	2 ⁷ / ₈	1 ³ / ₁₆	1 ⁷ / ₁₆	7 ¹ / ₈	1 ⁷ / ₈

Diagrams



* Not UL listed.

Copper mechanical connectors

Type STC – Copper single conductor, one-hole mount (straight tang)

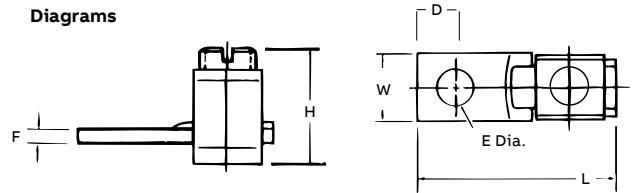


- Uniquely designed pressure bar and notched V-bottom collar provide a vise-like grip between conductor and terminal
- CSA certified and UL listed for copper conductors
- Made of electrolytic seamless copper
- Screws are zinc plated steel



Cat. no.	Conductor range (AWG or kcmil)		Dimensions (in.)						
	Max.	Min.	L	W	H	F	E	D	
STC1014*	10	14	1	5/16	1/2	5/64	5/32	3/16	
STC0614	6 str.	14	1 9/64	3/8	11/16	5/64	13/64	7/32	
STC0414	4 str.	14	1 1/4	1/2	37/32	3/32	17/64	1/4	
STC0208	2 str.	8 str.	1 15/32	1/2	31/32	3/32	17/64	1/7	
STC1102	1/0 str.	2 str.	1 15/16	5/8	1 1/4	1/8	17/64	7/16	
STC3104	3/0 str.	4 str.	2 1/4	3/4	1 9/16	1/8	13/32	7/16	
STC4102	4/0 str.	2 str.	2 3/8	1	1 23/32	1/8	11/32	1/2	
STC3511	350	1/0 str.	3 1/4	1	1 5/8	3/16	13/32	5/8	
STC5011	500	1/0 str.	3 7/8	1 1/2	1 13/16	3/16	13/32	15/16	
STC9960	1000	600	5	2	2 5/8	1/4	17/32	1 1/8	

Diagrams



* CSA not applicable.

Copper mechanical connectors

Type BTC – Copper single conductor, one-hole mount (offset tang)



- CSA certified and UL listed, tested for copper conductors
- Made of electrolytic seamless copper
- Screws are zinc plated steel



Cat. no.	Conductor range (AWG or kcmil)		Dimensions (in.)					
	Max.	Min.	L	W	H	F	E	D
BTC0614	6 str.	14	1 ³ / ₃₂	3/ ₈	25/ ₃₂	5/ ₆₄	13/ ₆₄	7/ ₃₂
BTC0208	2 str.	8 str.	1 ¹⁵ / ₃₂	1/ ₂	27/ ₃₂	3/ ₃₂	17/ ₆₄	1/ ₄
BTC1102	1/0 str.	2 str.	1 ²⁵ / ₃₂	5/ ₈	1 ¹³ / ₃₂	1/ ₈	17/ ₆₄	7/ ₁₆
BTC3104	3/0 str.	4 str.	2 ³ / ₆₄	3/ ₄	1 ⁹ / ₁₆	1/ ₈	13/ ₃₂	7/ ₁₆
BTC4102	4/0 str.	2 str.	2 ⁹ / ₁₆	1	1 ⁶¹ / ₆₄	1/ ₈	11/ ₃₂	1/ ₂
BTC3511	350	1/0 str.	3 ¹ / ₄	1	2 ¹ / ₂	3/ ₁₆	13/ ₃₂	5/ ₈
BTC5011	500	1/0 str.	4 ¹ / ₄	1 ¹ / ₂	2 ²¹ / ₃₂	3/ ₁₆	13/ ₃₂	15/ ₁₆
BTC9960	1000	600	4 ³ / ₄	2	3 ⁹ / ₁₆	1/ ₄	17/ ₃₂	1 ¹ / ₈

Diagrams

