

## Insulation-piercing connectors

Type IPC – Talon insulation piercing connectors



**No need to strip conductor insulation or use tape after installation.**

- For copper-to-copper, copper-to-aluminum and aluminum-to-aluminum applications (insulated conductor only)
- Performs as splice or tap for non-tension applications up to 600 V, depending on size of connector
- Self insulated for hot line applications
- Six sizes cover range from #10–500 kcmil
- UL® 486B Listed AL9CU (90 °C rated)

Type IPC – Talon insulation piercing connectors



Cat. no.	Al or Cu conductor range AWG/mm <sup>2</sup>		No. bolts	Fig.	Dimensions (in.)		
	Main	Tap			W	H	L
IPC1102*	1/0–8	2–8	1	1	2 <sup>9</sup> / <sub>16</sub>	2	1 <sup>17</sup> / <sub>32</sub>
	50–6	35–6	1	1	2 <sup>9</sup> / <sub>16</sub>	2	1 <sup>17</sup> / <sub>32</sub>
IPC4111	4/0–1/0	1/0–6	2	2	2 <sup>1</sup> / <sub>2</sub>	3	1 <sup>19</sup> / <sub>32</sub>
	95–50	50–16	2	2	2 <sup>1</sup> / <sub>2</sub>	3	1 <sup>29</sup> / <sub>32</sub>
IPC4141	4/0–1/0	4/0–1/0	2	2	2 <sup>5</sup> / <sub>8</sub>	3 <sup>1</sup> / <sub>4</sub>	1 <sup>29</sup> / <sub>32</sub>
	95–50	95–50	2	2	2 <sup>5</sup> / <sub>8</sub>	3 <sup>1</sup> / <sub>4</sub>	1 <sup>29</sup> / <sub>32</sub>
IPC5041*	500–350	4/0–4	1	1	2	2 <sup>1</sup> / <sub>2</sub>	2 <sup>1</sup> / <sub>8</sub>
	240–185	90–25	1	1	2	2 <sup>1</sup> / <sub>2</sub>	2 <sup>1</sup> / <sub>8</sub>
IPC3535	350–4/0	350–4/0	2	2	2 <sup>1</sup> / <sub>16</sub>	2 <sup>1</sup> / <sub>2</sub>	2 <sup>1</sup> / <sub>8</sub>
	185–95	185–95	2	2	2 <sup>1</sup> / <sub>16</sub>	2 <sup>1</sup> / <sub>2</sub>	2 <sup>1</sup> / <sub>8</sub>
IPC3541	350–4/0	4/0–10	1	1	2 <sup>3</sup> / <sub>4</sub>	3	2 <sup>5</sup> / <sub>8</sub>
	185–95	95–6	1	1	2 <sup>3</sup> / <sub>4</sub>	3	2 <sup>5</sup> / <sub>8</sub>

Diagrams

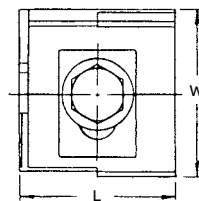


Fig. 1

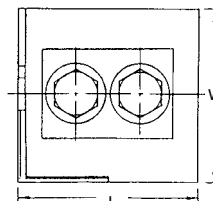
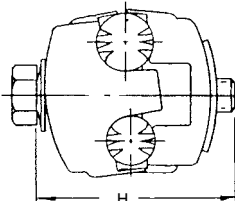
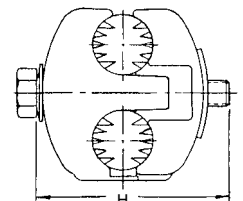


Fig. 2



\* 600V Rating (all others 300V).