

LTL series

30 AWG individual strand



Ordering information:

Length: Standard total lengths are 457 mm (18 in.). If different lengths are required, add your desired length in millimeters at the end of the part number. Ex.: LTL250A1610 (for 24 in. long)

Plating: Standard ferrules are electro-tin plated. Other options are available; please refer to page D4.

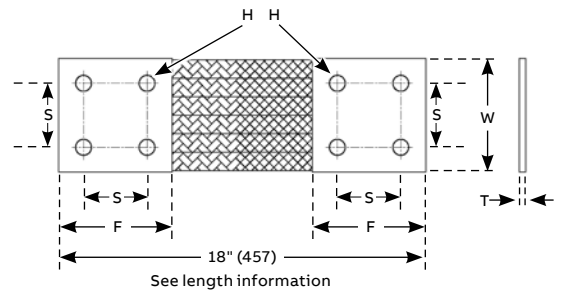
Standard flexible connectors – 4/4-hole

Cat. no.	*Ampacity Δ 65 °C	W in. (mm)	F in. (mm)	S in. (mm)	H in. (mm)	T in. (mm)	Weight lb (g)
LTL250A1	2,500**	6 ³ / ₈ (162)	6 (152.4)	2 (50.8)	1 ¹ / ₁₆ (18)	1/4 (6.3)	7.20 (3,266)
LTL300A1	3,000**	6 (152.4)	6 (152.4)	2 (50.8)	1 ¹ / ₁₆ (18)	3/8 (9.5)	9.86 (4,472)
LTL400A1	4,000**	6 (152.4)	6 (152.4)	2 (50.8)	1 ¹ / ₁₆ (18)	1/2 (12.7)	13.07 (5,929)

*Temperature rise test per; CEI60694, IEEE / ANSI C37, 34 1994.

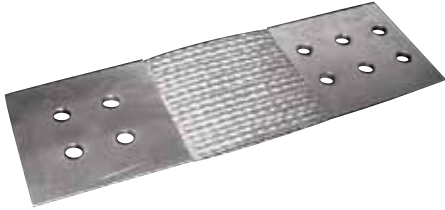
** For ampacity over 2,500 please contact your inside sale representative

Diagram



LTL series

30 AWG individual strand



Ordering information:

Length: Standard total lengths are 457 mm (18 in.). If different lengths are required, add your desired length in millimeters at the end of the part number. Ex.: LTL300B1610 (for 24 in. long)

Plating: Standard ferrules are electro-tin plated. Other options are available; please refer to page D4.

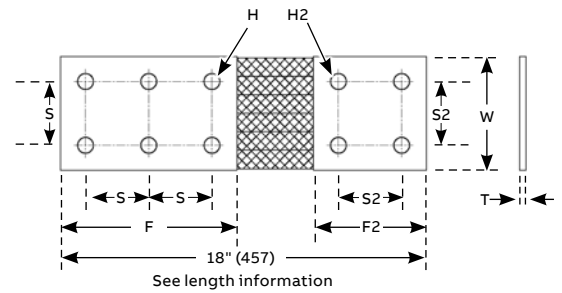
Standard flexible connectors – 6/4-hole

Cat. no.	*Ampacity Δ 65 °C	W in. (mm)	F in. (mm)	S in. (mm)	H in. (mm)	F2 in. (mm)	S2 in. (mm)	H2 in. (mm)	T in. (mm)	Weight lb (g)
LTL250B1	2,500**	6 3/8 (162)	6 (152.4)	2 (50.8)	1 1/16 (18)	6 (152.4)	2 (50.8)	1 1/16 (18)	1/4 (6.3)	7.24 (3,284)
LTL250B2	2,500**	6 3/8 (162)	5 1/2 (140)	1 3/4 (44.4)	9/16 (14.3)	6 (152.4)	2 (50.8)	1 1/16 (18)	1/4 (6.3)	7.24 (3,284)
LTL300B1	3,000**	6 (152.4)	6 (152.4)	2 (50.8)	1 1/16 (18)	6 (152.4)	2 (50.8)	1 1/16 (18)	3/8 (9.5)	9.92 (4,500)
LTL300B2	3,000**	6 (152.4)	5 1/2 (140)	1 3/4 (44.4)	9/16 (14.3)	6 (152.4)	2 (50.8)	1 1/16 (18)	3/8 (9.5)	9.92 (4,500)
LTL400B1	4,000**	6 (152.4)	6 (152.4)	2 (50.8)	1 1/16 (18)	6 (152.4)	2 (50.8)	1 1/16 (18)	1/2 (12.7)	13.15 (5,965)
LTL400B2	4,000**	6 (152.4)	5 1/2 (140)	1 3/4 (44.4)	9/16 (14.3)	6 (152.4)	2 (50.8)	1 1/16 (18)	1/2 (12.7)	13.15 (5,965)

*Temperature rise test per; CEI60694, IEEE / ANSI C37, 34 1994.

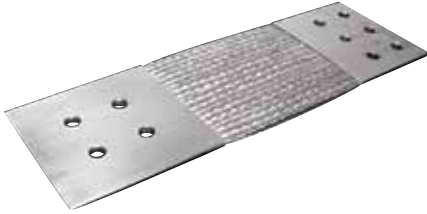
** For ampacity over 2,500 please contact your inside sale representative

Diagram



LTL series

30 AWG individual strand



Ordering information:

Length: Standard total lengths are 457 mm (18 in.). If different lengths are required, add your desired length in millimeters at the end of the part number. Ex.: LTL300C1610 (for 24 in. long)

Plating: Standard ferrules are electro-tin plated. Other options are available; please refer to page D4.

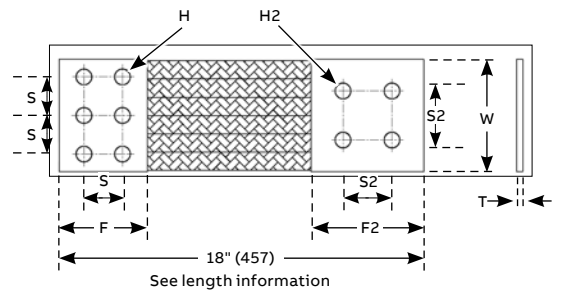
Standard flexible connectors – 6/4-hole

Cat. no.	*Ampacity Δ 65 °C	W in. (mm)	F in. (mm)	S in. (mm)	H in. (mm)	S2 in. (mm)	H2 in. (mm)	T in. (mm)	Weight lb (g)
LTL250C1	2,500**	6 $\frac{3}{8}$ (162)	4 (101.6)	2 (50.8)	$\frac{11}{16}$ (18)	2 (50.8)	$\frac{11}{16}$ (18)	$\frac{1}{4}$ (6.3)	6.58 (2,985)
LTL250C2	2,500**	6 $\frac{3}{8}$ (162)	4 (101.6)	1 $\frac{3}{4}$ (44.4)	$\frac{9}{16}$ (14.3)	2 (50.8)	$\frac{11}{16}$ (18)	$\frac{1}{4}$ (6.3)	6.58 (2,985)
LTL300C1	3,000**	6 (152.4)	4 (101.6)	2 (50.8)	$\frac{11}{16}$ (18)	2 (50.8)	$\frac{11}{16}$ (18)	$\frac{3}{8}$ (9.5)	9.21 (4,178)
LTL300C2	3,000**	6 (152.4)	4 (101.6)	1 $\frac{3}{4}$ (44.4)	$\frac{9}{16}$ (14.3)	2 (50.8)	$\frac{11}{16}$ (18)	$\frac{3}{8}$ (9.5)	9.21 (4,178)
LTL400C1	4,000**	6 (152.4)	4 (101.6)	2 (50.8)	$\frac{11}{16}$ (18)	2 (50.8)	$\frac{11}{16}$ (18)	$\frac{1}{2}$ (12.7)	12.40 (5,625)
LTL400C2	4,000**	6 (152.4)	4 (101.6)	1 $\frac{3}{4}$ (44.4)	$\frac{9}{16}$ (14.3)	2 (50.8)	$\frac{11}{16}$ (18)	$\frac{1}{2}$ (12.7)	12.40 (5,625)

*Temperature rise test per; CEI60694, IEEE / ANSI C37, 34 1994.

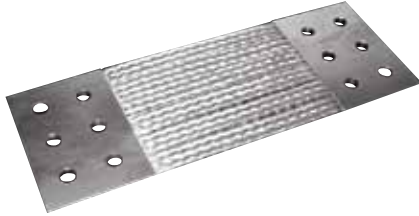
** For ampacity over 2,500 please contact your inside sale representative

Diagram



LTL series

30 AWG individual strand



Ordering information:

Length: Standard total lengths are 406 mm (16 in.). If different lengths are required, add your desired length in millimeters at the end of the part number. Ex.: LTL300D1610 (for 24 in. long)

Plating: Standard ferrules are electro-tin plated. Other options are available; please refer to page D4.

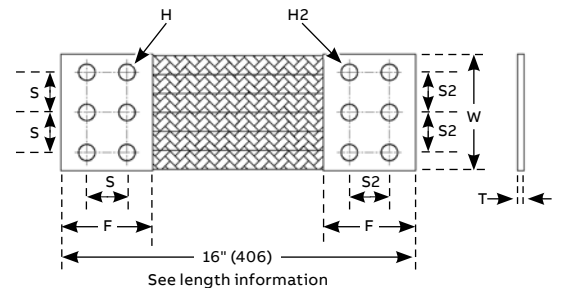
Standard flexible connectors – 6/6-hole

Cat. no.	*Ampacity Δ 65 °C	W in. (mm)	F in. (mm)	S in. (mm)	H in. (mm)	S2 in. (mm)	H2 in. (mm)	T in. (mm)	Weight lb (g)
LTL250D1	2,500**	6 3/8 (162)	4 (101.6)	2 (50.8)	1 1/16 (18)	2 (50.8)	1 1/16 (18)	1/4 (6.3)	5.95 (2,699)
LTL250D2	2,500**	6 3/8 (162)	4 (101.6)	2 (50.8)	1 1/16 (18)	1 3/4 (44.4)	9/16 (14.2)	1/4 (6.3)	5.95 (2,699)
LTL250D3	2,500**	6 3/8 (162)	4 (101.6)	1 3/4 (44.4)	9/16 (14.3)	1 3/4 (44.4)	9/16 (14.2)	1/4 (6.3)	5.95 (2,699)
LTL300D1	3,000**	6 (152.4)	4 (101.6)	2 (50.8)	1 1/16 (18)	2 (50.8)	1 1/16 (18)	3/8 (9.5)	8.56 (3,883)
LTL300D2	3,000**	6 (152.4)	4 (101.6)	2 (50.8)	1 1/16 (18)	1 3/4 (44.4)	9/16 (14.2)	3/8 (9.5)	8.56 (3,883)
LTL300D3	3,000**	6 (152.4)	4 (101.6)	1 3/4 (44.4)	9/16 (14.3)	1 3/4 (44.4)	9/16 (14.2)	3/8 (9.5)	8.56 (3,883)
LTL400D1	4,000**	6 (152.4)	4 (101.6)	2 (50.8)	1 1/16 (18)	2 (50.8)	1 1/16 (18)	1/2 (12.7)	11.73 (5,321)
LTL400D2	4,000**	6 (152.4)	4 (101.6)	2 (50.8)	1 1/16 (18)	1 3/4 (44.4)	9/16 (14.2)	1/2 (12.7)	11.73 (5,321)
LTL400D3	4,000**	6 (152.4)	4 (101.6)	1 3/4 (44.4)	9/16 (14.3)	1 3/4 (44.4)	9/16 (14.2)	1/2 (12.7)	11.73 (5,321)

*Temperature rise test per; CEI60694, IEEE / ANSI C37, 34 1994.

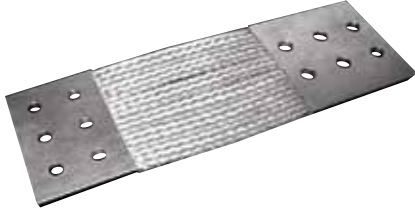
** For ampacity over 2,500 please contact your inside sale representative

Diagram



LTL series

30 AWG individual strand



Ordering information:

Length: Standard total lengths are 457 mm (18 in.). If different lengths are required, add your desired length in millimeters at the end of the part number. Ex.: LTL300E1610 (for 24 in. long)

Plating: Standard ferrules are electro-tin plated. Other options are available; please refer to page D4.

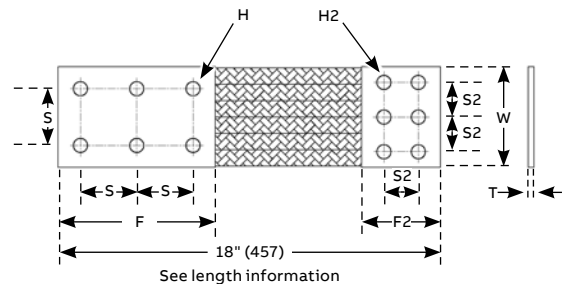
Standard flexible connectors – 6/6-hole

Cat. no.	*Ampacity Δ 65 °C	W in. (mm)	F in. (mm)	S in. (mm)	H in. (mm)	F2 in. (mm)	S2 in. (mm)	H2 in. (mm)	T in. (mm)	Weight lb (g)
LTL250E1	2,500**	6 ³ / ₈ (162)	6 (152.4)	2 (50.8)	¹¹ / ₁₆ (18)	4 (101.6)	2 (50.8)	¹¹ / ₁₆ (18)	¹ / ₄ (6.3)	6.53 (2,962)
LTL250E2	2,500**	6 ³ / ₈ (162)	6 (152.4)	2 (50.8)	¹¹ / ₁₆ (18)	4 (101.6)	1 ³ / ₄ (44.4)	⁹ / ₁₆ (14.2)	¹ / ₄ (6.3)	6.53 (2,962)
LTL250E3	2,500**	6 ³ / ₈ (162)	5 ¹ / ₂ (140)	1 ³ / ₄ (44.4)	⁹ / ₁₆ (14.3)	4 (101.6)	1 ³ / ₄ (44.4)	⁹ / ₁₆ (14.2)	¹ / ₄ (6.3)	6.53 (2,962)
LTL300E1	3,000**	6 (152.4)	6 (152.4)	2 (50.8)	¹¹ / ₁₆ (18)	4 (101.6)	2 (50.8)	¹¹ / ₁₆ (18)	³ / ₈ (9.5)	9.15 (4,150)
LTL300E2	3,000**	6 (152.4)	6 (152.4)	2 (50.8)	¹¹ / ₁₆ (18)	4 (101.6)	1 ³ / ₄ (44.4)	⁹ / ₁₆ (14.2)	³ / ₈ (9.5)	9.15 (4,150)
LTL300E3	3,000**	6 (152.4)	5 ¹ / ₂ (140)	1 ³ / ₄ (44.4)	⁹ / ₁₆ (14.3)	4 (101.6)	1 ³ / ₄ (44.4)	⁹ / ₁₆ (14.2)	³ / ₈ (9.5)	9.15 (4,150)
LTL400E1	4,000**	6 (152.4)	6 (152.4)	2 (50.8)	¹¹ / ₁₆ (18)	4 (101.6)	2 (50.8)	¹¹ / ₁₆ (18)	¹ / ₂ (12.7)	12.32 (5,588)
LTL400E2	4,000**	6 (152.4)	6 (152.4)	2 (50.8)	¹¹ / ₁₆ (18)	4 (101.6)	1 ³ / ₄ (44.4)	⁹ / ₁₆ (14.2)	¹ / ₂ (12.7)	12.32 (5,588)
LTL400E3	4,000**	6 (152.4)	5 ¹ / ₂ (140)	1 ³ / ₄ (44.4)	⁹ / ₁₆ (14.3)	4 (101.6)	1 ³ / ₄ (44.4)	⁹ / ₁₆ (14.2)	¹ / ₂ (12.7)	12.32 (5,588)

*Temperature rise test per; CEI60694, IEEE / ANSI C37, 34 1994.

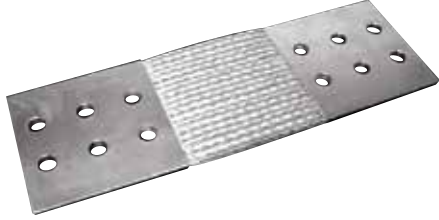
** For ampacity over 2,500 please contact your inside sale representative

Diagram



LTL series

30 AWG individual strand



Ordering information:

Length: Standard total lengths are 457 mm (18 in.). If different lengths are required, add your desired length in millimeters at the end of the part number. Ex.: LTL250F1610 (for 24 in. long)

Plating: Standard ferrules are electro-tin plated. Other options are available; please refer to page D4.

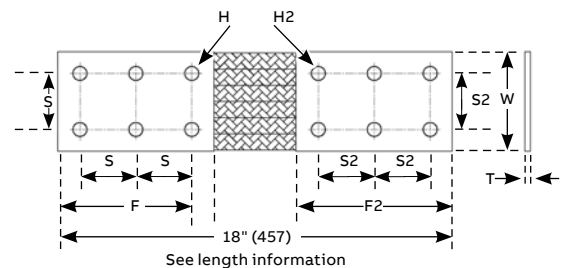
Standard flexible connectors – 6/6-hole

Cat. no.	*Ampacity Δ 65 °C	W in. (mm)	F in. (mm)	S in. (mm)	H in. (mm)	F2 in. (mm)	S2 in. (mm)	H2 in. (mm)	T in. (mm)	Weight lb (g)
LTL250F1	2,500**	6 ⁵ / ₈ (162)	6 (152.4)	2 (50.8)	1 ¹ / ₁₆ (18)	6 (152.4)	2 (50.8)	1 ¹ / ₁₆ (18)	¼ (6.3)	7.12 (3,230)
LTL250F2	2,500**	6 ⁵ / ₈ (162)	6 (152.4)	2 (50.8)	1 ¹ / ₁₆ (18)	6 (152.4)	1 ³ / ₄ (44.4)	9 ¹ / ₁₆ (14.2)	¼ (6.3)	7.12 (3,230)
LTL250F3	2,500**	6 ⁵ / ₈ (162)	5½ (140)	1¾ (44.4)	9 ¹ / ₁₆ (14.3)	5½ (140)	1¾ (44.4)	9 ¹ / ₁₆ (14.2)	¼ (6.3)	7.12 (3,230)
LTL300F1	3,000**	6 (152.4)	6 (152.4)	2 (50.8)	1 ¹ / ₁₆ (18)	6 (152.4)	2 (50.8)	1 ¹ / ₁₆ (18)	3 ⁸ / ₁₆ (9.5)	9.74 (4,418)
LTL300F2	3,000**	6 (152.4)	6 (152.4)	2 (50.8)	1 ¹ / ₁₆ (18)	6 (152.4)	1¾ (44.4)	9 ¹ / ₁₆ (14.2)	3 ⁸ / ₁₆ (9.5)	9.74 (4,418)
LTL300F3	3,000**	6 (152.4)	5½ (140)	1¾ (44.4)	9 ¹ / ₁₆ (14.3)	5½ (140)	1¾ (44.4)	9 ¹ / ₁₆ (14.2)	3 ⁸ / ₁₆ (9.5)	9.74 (4,418)
LTL400F1	4,000**	6 (152.4)	6 (152.4)	2 (50.8)	1 ¹ / ₁₆ (18)	6 (152.4)	2 (50.8)	1 ¹ / ₁₆ (18)	½ (12.7)	12.91 (5,856)
LTL400F2	4,000**	6 (152.4)	6 (152.4)	2 (50.8)	1 ¹ / ₁₆ (18)	5½ (140)	1¾ (44.4)	9 ¹ / ₁₆ (14.2)	½ (12.7)	12.91 (5,856)
LTL400F3	4,000**	6 (152.4)	5½ (140)	1¾ (44.4)	9 ¹ / ₁₆ (14.3)	5½ (140)	1¾ (44.4)	9 ¹ / ₁₆ (14.2)	½ (12.7)	12.91 (5,856)

*Temperature rise test per; CEI60694, IEEE / ANSI C37, 34 1994.

** For ampacity over 2,500 please contact your inside sale representative

Diagram



See length information