

LUFTM/LUFT/LU3FTC SERIES

Single and Three Phase Inverters





Introducing Lumacell's all-new lineup of innovative central inverter systems, featuring an expanded range of capacities, reduced footprints, and more options than ever before.



Built with the needs of engineers, designers, and building owners in mind, each of these state-of-the-art inverters boasts an industry-leading **compact design which significantly simplifies installation and maintenance, striking the perfect balance between efficiency, safety, and style.**

Whether you need to power emergency lighting in a small school, a large distribution centre, or any space **where aesthetics meet practicality**, our single and three phase systems include a broad range of capacities and connectivity offerings **to meet your specific needs.**

Allowing you to utilize existing lights as emergency lighting, **Lumacell inverters provide reliable and cost-effective solutions** that help ensure you'll never have to choose between safety and style.

FIND THE PERFECT SYSTEM FOR YOUR PROJECT:

Learn more about the lineup below and see which inverter best fits your application needs!

LUFTM

Single Phase Inverter
1000VA to 2800VA



LUFT

Single Phase Inverter
1.5KVA to 16.7KVA



LU3FTC

Three Phase Inverter
4.8KVA to 50KVA



- CUL Listed to CSA 22.2.141-15 (applies to all)
- Now with integral output breakers for easier circuiting
- Simplifies system management with a single point for testing, maintenance, and service
- Available with BACnet or Modbus communication interface





LUFTM

Meets power needs ranging from 1000VA to 2800VA.

Thanks to its small footprint, this system is easy to install almost anywhere with either wall or floor mounting.



Reduces operating costs

- Low energy consumption and low heat dissipation



Save precious floorspace

- Stackable cabinets only require a small footprint and can be installed almost anywhere in a building



Easier installation & maintenance

- New integral output breakers allow for easier circuiting
- Optional internal maintenance bypass

LUFT

Meets power needs ranging from 1.5KVA to 16.7KVA.

Easy to install and maintain with a single point for testing and servicing.



Specialized for emergency lighting

- Uses a solid-state pulse width modulation inverter to provide pure sinusoidal output waveform



Easy maintenance & testing

- User-friendly LCD display, programmable monthly and annual self-testing, and an automatic test, event, and alarm log help keep buildings code compliant
- Optional internal maintenance bypass



Fast transfer

- 2ms transfer time and 98% efficient at full load



LU3FTC

Meets power needs ranging from 4.8KVA to 50KVA.

Features an extra durable design and helps reduce maintenance costs of testing individual lighting units and emergency ballasts.



Easy maintenance

- Multiple alarms, programmable monthly and annual self-testing, and an automatic test, event, and alarm log help minimize maintenance
- Internal maintenance bypass comes standard for the LU3FTC



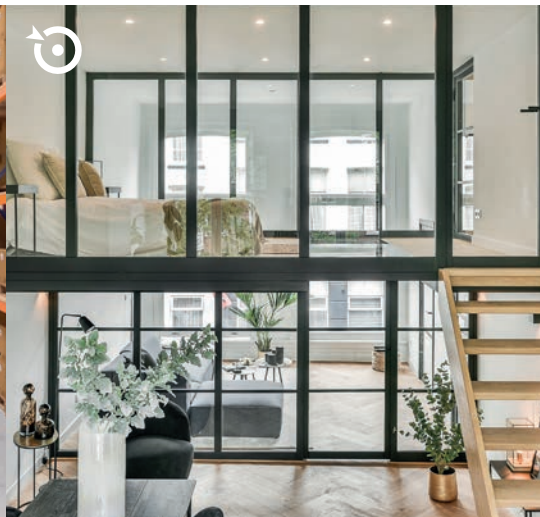
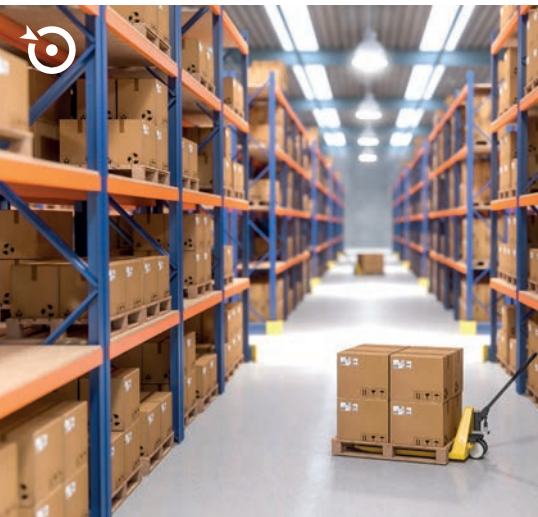
User-friendly controls

- The microprocessor controller has 2 x 20-character displays with touch pad controls & functions, 5 LED indicators & alarm with ring-back feature



Minimize system footprint

- Stackable battery cabinets (up to 16.7kVA) means less floor space goes to waste



REACH OUT TO YOUR LOCAL LUMACELL REPRESENTATIVE TODAY

to find out how quickly single and/or three phase inverters can make sense for your building projects.



WANT TO LEARN MORE?

Scan the QR code to see our full central systems offering.

Lumacell.

The ultimate solution in emergency lighting.

