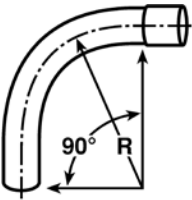


Schedule 40 elbows

Integral belled end for use with nonmetallic solvent weld fittings

90° Elbow

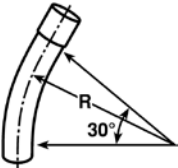


Item	Belled end cat. no.	Trade size (in.)	Std. ctn. qty.
	UA9ADCB-CTN	1/2	40
	UA9AECB-CTN	3/4	25
	UA9AFCB-CTN	1	25
	UA9AGCB-UPC	1 1/4	20
	UA9AHCB-UPC	1 1/2	25
	UA9AJCB-UPC	2	20
	UA9AKCB-CTN	2 1/2	10
	UA9ALCB-UPC	3	25
	UA9AMCB	3 1/2	1
	UA9ANCB	4	1
	UA9APCB	5	1
	UA9ARCB	6	1

Custom elbows available on request. Plain end elbows also available.

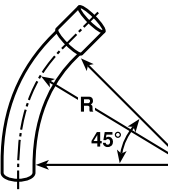
30° Elbow



Item	Belled end cat. no.	Trade size (in.)	Std. ctn. qty.
	UA6ADB	1/2	50
	UA6AEB	3/4	25
	UA6AFB	1	8
	UA6AGB	1 1/4	20
	UA6AHB	1 1/2	1


45° Elbow



Item	Belled end cat. no.	Trade size (in.)	Std. ctn. qty.
	UA7ADCB-CTN	1/2	25
	UA7AECB-CTN	3/4	20
	UA7AFCB-CTN	1	14
	UA7AGCB	1 1/4	20
	UA7AHCB	1 1/2	20
	UA7AJCB	2	20
	UA7ALCB	3	5
	UA7AMCB	3 1/2	1
	UA7ANCB	4	1
	UA7APCB	5	1
	UA7ARCB	6	1

Flexible elbows

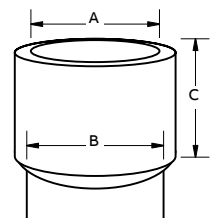


Item	Belled end cat. no.	Trade size (in.)	Std. ctn. qty.
	UAFAD	1/2	8
	UAFAE	3/4	6
	UAFAF	1	6

Integral belled end dimensions

Trade size of conduit (in.)	A		B		C	
	At entrance (in.)		At bottom (in.)		Socket depth (in.)	
	Max.	Min.	Max.	Min.	Max.	Min.
1/2	0.860	0.844	0.844	0.828	1.500	0.652
3/4	1.074	1.054	1.056	1.036	1.500	0.719
1	1.340	1.320	1.320	1.300	1.875	0.875
1 1/4	1.689	1.665	1.667	1.643	2.000	0.938
1 1/2	1.930	1.906	1.906	1.882	2.000	1.062
2	2.405	2.381	2.381	2.357	2.000	1.125
2 1/2	2.905	2.875	2.883	2.853	3.000	1.469
3	3.530	3.500	3.507	3.477	3.125	1.594
3 1/2	4.065	3.965	4.007	3.977	3.250	1.687
4	4.565	4.465	4.506	4.476	3.375	1.750
5	5.653	5.543	5.583	5.523	3.625	1.937
6	6.708	6.608	6.644	6.584	3.750	2.125

Diagram



Standard radius elbow dimensions

Trade size (in.)	A (in.)	B (in.)		C (in.)	
		Min. (radius)	Min.	Min.	Min.
1/2	0.840	4	1 1/2		
3/4	1.050	4 1/2	1 1/2		
1	1.315	5 3/4	1 7/8		
1 1/4	1.660	7 3/4	2		
1 1/2	1.900	8 3/4	2		
2	2.375	9 1/2	2		
2 1/2	2.875	10 1/2	3		
3	3.500	13	3 1/8		
3 1/2	4.000	15	3 1/4		
4	4.500	16	3 3/8		
5	5.563	24	3 5/8		
6	6.625	30	3 3/4		

Diagrams

