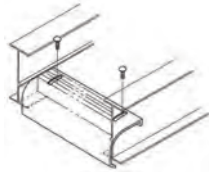


Cable Protection

Drop-Out



Designed to provide a smooth radius surface at any position on the tray or trough bottom. Drop outs are easily attached using hardware provided. Standard radius = 4 in.

Cat. No.	Material Prefix	Tray Width (in.)
(Prefix)-(*)-DO (Prefix)-(*)-DOS +	SPW SHW SSW	06
		09
		12
		18
		24
		30
		36
		42

(*) Insert tray width
+ DOS = is for solid tray.

Wall Penetration Sleeve



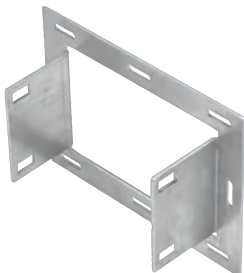
Sold with cover

Designed to pass through walls and fire walls. Hardware included.
Note: not fire rated. Fire stop not included.

Cat. No.	Material Prefix	Tray Width (in.)	Side Rail Height (in.)
(Prefix)-(*)-(**)-WPS	SPW SHW SSW	06	3
		09	4
		12	5
		18	6
		24	7
		30	
		36	
		42	

(*) Insert side rail height.
(**) Insert tray width

Frame Type Tray to Box Plate



Designed to secure tray to electrical enclosures and panels.

Hardware included.

Cat. No.	Material Prefix	Tray Width (in.)	Side Rail Height (in.)
(Prefix)-(*)-(**)-FBP	SPW SHW SSW	06	3
		09	4
		12	5
		18	6
		24	7
		30	
		36	
		42	

(*) Insert side rail height.
(**) Insert tray width

Nylon Expansion Pad



Allows for thermal expansion and contraction of cable trays over supports.

Cat. No.	Material
ABW-NSP	Natural nylon