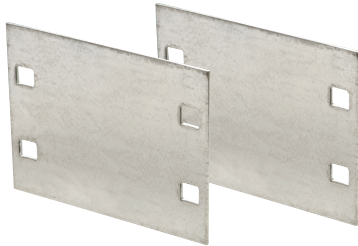


Splice Plates

Standard Splice Plate

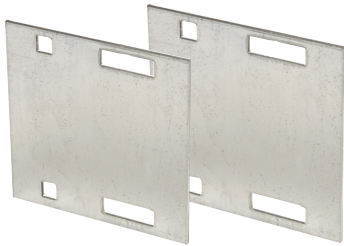


Packaged in pairs with hardware. Kit Contents 8 bolts, 8 nuts, 8 washers 3/8 in. diameter.

Provided as standard with each straight and/or fitting.

Cat. No.	Material Prefix	Side Rail Height
(Prefix)-2-SSP	ALUW SHUW SPUW SSUW	2
(Prefix)-3-SSP	ALUW SHW SPW SSW	3
(Prefix)-6-SSP		6

Expansion Splice Plate

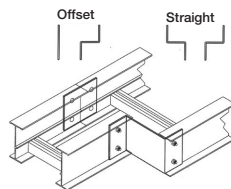
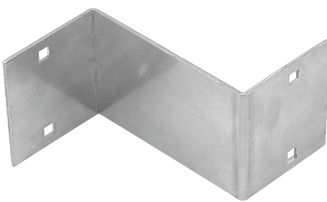


Allows for a 1 in. expansion or contraction of tray system.

Packaged in pairs with hardware. Kit Contents 8 bolts, 8 nuts, 8 washers 3/8 in. diameter.

Cat. No.	Material Prefix	Side Rail Height
(Prefix)-2-ESP	ALUW SHUW SPUW SSUW	2
(Prefix)-3-ESP	ALUW SHW SPW SSW	3
(Prefix)-6-ESP		6

Reducing Splice



Cat. No.	Material Prefix	Side Rail Height
(Prefix)-2(*)-RSP	ALUW SHUW SPUW SSUW	2
(Prefix)-3(*)-RSP	ALUW SHW SPW SSW	3
(Prefix)-6(*)-RSP		6

*Note: For offset reduction: Insert width to be reduced.
For straight Reduction: Insert 1/2 width to be reduced (2 required)

Example: ALUW-603-RSP = 3 in. offset reducer

Used in pairs to provide a straight reduction or used with a standard splice plate for an offset reduction. One per package with hardware. Kit Contents 8 bolts, 8 nuts, 8 washers 3/8 in. diameter.