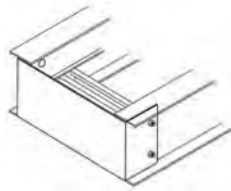


Accessories

Closure End Plate

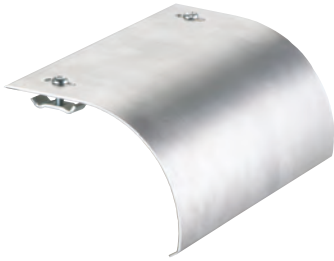


Cat. No.	Material Prefix	Side Rail Height (in.)	Tray Width (in.)
(Prefix)-2-**-CEP	ALUW SPUW SHUW SSUW	2	6
			12
			18
(Prefix)-3-**-CEP	ALUW SPW SHW SSW	3	24
			30
			36
(Prefix)-6-**-CEP		6	

** Insert tray width

Provides closure for any tray end. Hardware included.

Drop Out



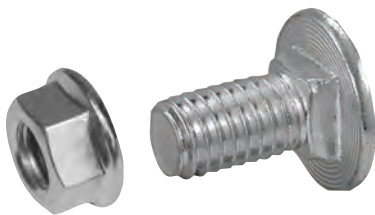
Designed to provide a smooth radius surface at any position on the tray or trough bottom.

Drop outs are easily attached using hardware provided. Standard Radius = 4 in.

Cat. No.	Material Prefix	Width (in.)
(Prefix)-**-DOS	ALUW SPW SSW SHW	6
		12
		18
		24
		30
		36

** Insert tray width

Steel Tray Hardware



Square shoulder self-positioning carriage bolt.

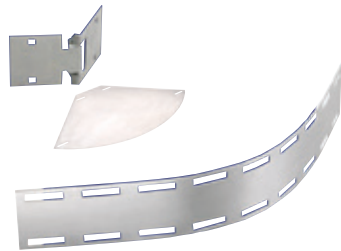
Cat. No.	Material	Description
SPW-1/4-CB	Zinc plated steel	1/4 in. carriage bolt
SPW-3/8-CB		3/8 in. carriage bolt
SPW-1/4-HN		1/4 in. serrated flange nuts
SPW-3/8-HN		3/8 in. serrated flange nuts
SSW-3/8-CB	316 stainless	3/8 in. carriage bolt
SSW-3/8-HN		3/8 in. hex. nut
SSW-3/8-HWK*		316 stainless steel hardware kit

Hardware kit

* Contains 8 serrated flange nuts, 8 bolts, 8 lock washers.

Accessories

Horizontal Adjustable Plate

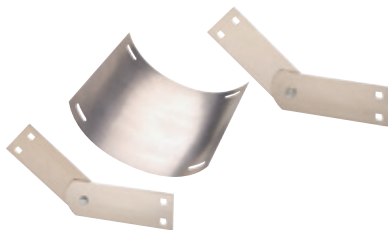


Adjustable hinge plates provide maximum horizontal installation flexibility. Furnished as a kit with hardware.

Cat. No.	Material Prefix	Side Rail Height (in.)	Tray Width (in.)
(Prefix)-(*)06-HAP	ALUW SPUW SSUW SHUW	2 3 6	6
(Prefix)-(*)08-HAP			8
(Prefix)-(*)12-HAP			12
(Prefix)-(*)18-HAP			18
(Prefix)-(*)24-HAP			24
(Prefix)-(*)30-HAP			30
(Prefix)-(*)36-HAP			36

(*) Insert side rail height

Vertical Adjustable Plate



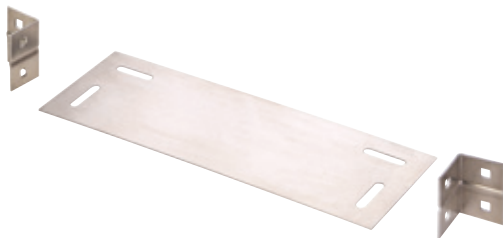
Adjustable hinge plates provide maximum horizontal installation flexibility elevation changes.

Furnished as a kit with hardware.

Cat. No.	Material Prefix	Side Rail Height (in.)	Tray Width (in.)
(Prefix)-2-**-VSP	ALUW SPUW SHUW SSUW	2	6
(Prefix)-3-**-VSP			12
(Prefix)-6-**-VSP		18	
		3	24
			30
		6	36

(**) Insert width

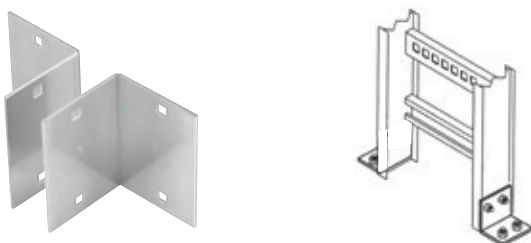
Horizontal Tee Branch



Cat. No.	Material Prefix	Side Rail Height (in.)	Tray Width (in.)
(Prefix)-2-(**)-HTB	ALUW SPUW SHUW SSUW	2	6
(Prefix)-3-(**)-HTB			12
(Prefix)-6-(**)-HTB		18	
		3	24
			30
		6	36

(**) Insert width

Box to Tray Plates



Designed to secure tray to electrical panels or boxes, walls or end supports. Packaged in pairs with hardware.

Cat. No.	Material Prefix	Side Rail Height (in.)
(Prefix)-2-BSP	ALUW SPUW SHUW SSUW	2
(Prefix)-3-BSP	ALUW SPW SHW SSW	3
(Prefix)-6-BSP		6