

## Fittings

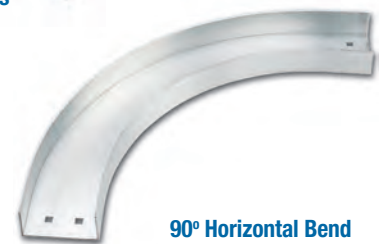
### How to create fitting part numbers

1. Select fitting material
2. Select nominal width of fitting
3. Select type of fitting
4. Select degree of angle if required
5. Select radius

### Example:

#### ALTF04SHB4512

- Aluminum
- 4 in. wide
- Horizontal bend
- 45° degree
- 12 in. radius



### Fittings Number Selection



<b>(ALT) F 04 S HB 45 12</b>							
Material Prefix	Series	Type	Width	Bottom Style	Fitting Type	Degree*	Radius
<b>AL</b> • Aluminum <b>SP</b> • Pregalvanized <b>SH</b> • Hot-dipped galvanized <b>SS</b> • 316 Stainless steel	<b>T</b> • Cable channel	<b>F</b> • Fitting	<b>01</b> • (1.5 in.) <b>03</b> • (3 in.) <b>04</b> • (4 in.) <b>06</b> • (6 in.)	<b>S</b> • Solid trough	<b>HB</b> • Horizontal bend <b>HT</b> • Horizontal tee <b>HX</b> • Horizontal cross <b>VO</b> • Vertical outside bend <b>VI</b> • Vertical inside bend	<b>30</b> • (30°) <b>45</b> • (45°) <b>60</b> • (60°) <b>90</b> • (90°)	<b>12</b> • 12 in. <b>24</b> • 24 in. <b>0</b> • Zero radius

\*Required for HB, VI & VO only.

## Fittings

### 90° Horizontal Bends

#### Part Numbering System

**ALT F 06 S HB 90 24**

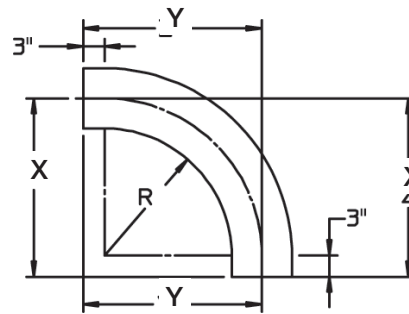
Material      Fitting      Width      Bottom style      Fitting type      Angle      Radius

#### Selection Guide

Prefix: ALT (Alum.), SPT (Pregalv.), SHT (Hot-Dip Galv.), SST (Stainless Steel)  
 Inside Channel Widths: 01=1.5 in., 03=3 in., 04=4 in., 06=6 in.  
 Bottom Style: S—Solid



#### 90° Horizontal Bend



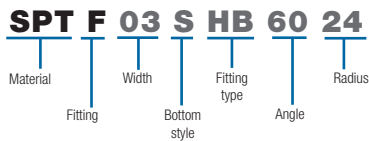
Radius (in.)	Width (in.)	Cat. No.*	Dimensions (in.)	
			X	Y
<b>12</b>	1.5	(Prefix)-F 01-S-HB90-12	15-3/4	15-3/4
	3	(Prefix)-F 03-S-HB90-12	16-1/2	16-1/2
	4	(Prefix)-F 04-S-HB90-12	17	17
	6	(Prefix)-F 06-S-HB90-12	18	18
<b>24</b>	1.5	(Prefix)-F 01-S-HB90-24	27-3/4	27-3/4
	3	(Prefix)-F 03-S-HB90-24	28-1/2	28-1/2
	4	(Prefix)-F 04-S-HB90-24	29	29
	6	(Prefix)-F 06-S-HB90-24	30	30

\*Specify prefixes ALT, SPT, SHT or SST

## Fittings

### 60° Horizontal Bends

#### Part Numbering System

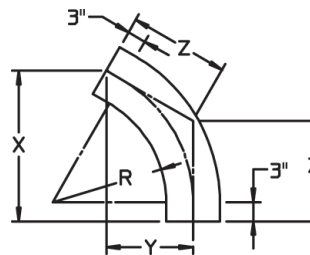


#### Selection Guide

Prefix: ALT (Alum.), SPT (Pregalv.), SHT (Hot-Dip Galv.), SST (Stainless Steel)  
 Inside Channel Widths: 01=1.5 in., 03=3 in., 04=4 in., 06=6 in.  
 Bottom Style: S– Solid



#### 60° Horizontal Bend



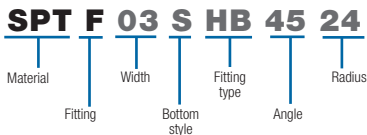
Radius (in.)	Width (in.)	Cat. No.	Dimensions (in.)		
			X	Y	Z
<b>12</b>	1.5	(Prefix)-F 01-S-HB60-12	15-1/2	9	10-1/4
	3	(Prefix)-F 03-S-HB60-12	16-3/16	9-3/8	10-13/16
	4	(Prefix)-F 04-S-HB60-12	16-5/8	9-5/8	11-1/16
	6	(Prefix)-F 06-S-HB60-12	17-1/2	10-1/8	11-11/16
<b>24</b>	1.5	(Prefix)-F 01-S-HB60-24	26	15	17-1/4
	3	(Prefix)-F 03-S-HB60-24	26-9/16	15-3/8	17-3/4
	4	(Prefix)-F 04-S-HB60-24	27	15-5/8	18
	6	(Prefix)-F 06-S-HB60-24	27-7/8	16-1/8	18-9/16

\*Specify prefixes ALT, SPT, SHT or SST

## Fittings

### 45° Horizontal Bends

#### Part Numbering System

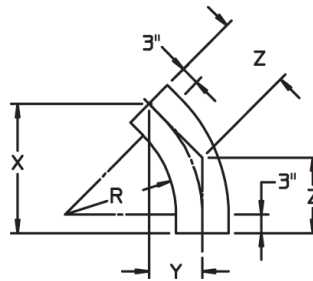


#### Selection Guide

Prefix: ALT (Alum.), SPT (Pregalv.), SHT (Hot-Dip Galv.), SST (Stainless Steel)  
 Inside Channel Widths: 01=1.5 in., 03=3 in., 04=4 in., 06=6 in.  
 Bottom Style: S—Solid



#### 45° Horizontal Bend



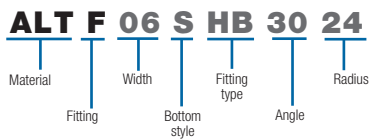
Radius (in.) R	Width (in.) W	Cat. No.	Dimensions (in.)		
			X	Y	Z
<b>12</b>	1.5	(Prefix)-F 01-S-HB45-12	14-1/8	5-7/8	8-1/4
	3	(Prefix)-F 03-S-HB45-12	14-11/16	6-1/16	8-9/16
	4	(Prefix)-F 04-S-HB45-12	15	6-1/4	8-13/16
	6	(Prefix)-F 06-S-HB45-12	15-3/4	6-1/2	9-3/16
<b>24</b>	1.5	(Prefix)-F 01-S-HB45-24	22-5/8	9-3/8	13-1/4
	3	(Prefix)-F 03-S-HB45-24	23-1/8	9-9/16	13-9/16
	4	(Prefix)-F 04-S-HB45-24	23-1/2	9-3/4	13-3/4
	6	(Prefix)-F 06-S-HB45-24	24-3/16	10	14-3/16

\*Specify prefixes ALT, SPT, SHT or SST

## Fittings

### 30° Horizontal Bends

#### Part Numbering System

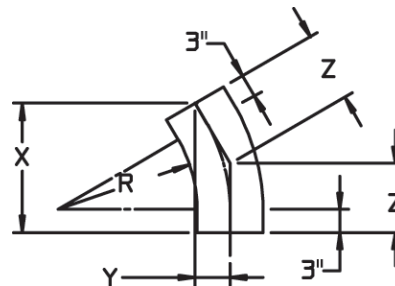


#### Selection Guide

Prefix: ALT (Alum.), SPT (Pregalv.), SHT (Hot-Dip Galv.), SST (Stainless Steel)  
 Inside Channel Widths: 01=1.5 in., 03=3 in., 04=4 in., 06=6 in.  
 Bottom Style: S– Solid



#### 30° Horizontal Bend



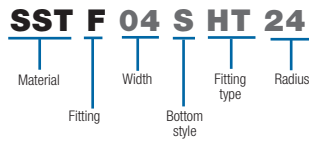
Radius (in.)	Width (in.)	Cat. No.	Dimensions (in.)		
			X	Y	Z
<b>12</b>	1.5	(Prefix)-F 01-S-HB30-12	12	3-1/4	6-1/2
	3	(Prefix)-F 03-S-HB30-12	12-3/8	3-5/16	6-5/8
	4	(Prefix)-F 04-S-HB30-12	12-5/8	3-3/8	6-3/4
	6	(Prefix)-F 06-S-HB30-12	13-1/8	3-1/2	7
<b>24</b>	1.5	(Prefix)-F 01-S-HB30-24	18	4-3/4	9-5/8
	3	(Prefix)-F 03-S-HB30-24	18-3/8	4-15/16	9-13/16
	4	(Prefix)-F 04-S-HB30-24	18-5/8	5	9-15/16
	6	(Prefix)-F 06-S-HB30-24	19-1/8	5-1/8	10-1/4

\*Specify prefixes ALT, SPT, SHT or SST

## Fittings

### Horizontal Tees

#### Part Numbering System

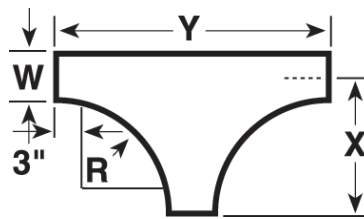


#### Selection Guide

Prefix: ALT (Alum.), SPT (Pregalv.), SHT (Hot-Dip Galv.), SST (Stainless Steel)  
 Inside Channel Widths: 01=1.5 in., 03=3 in., 04=4 in., 06=6 in.  
 Bottom Style: S= Solid



#### Horizontal Tee



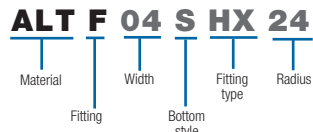
Radius (in.) R	Width (in.) W	Cat. No.	Dimensions (in.)	
			X	Y
<b>12</b>	1.5	(Prefix)-F 01-S-HT-12	15-3/4	31-1/2
	3	(Prefix)-F 03-S-HT-12	16-1/2	33
	4	(Prefix)-F 04-S-HT-12	17	34
	6	(Prefix)-F 06-S-HT-12	18	36
<b>24</b>	1.5	(Prefix)-F 01-S-HT-24	27-3/4	55-1/2
	3	(Prefix)-F 03-S-HT-24	28-1/2	57
	4	(Prefix)-F 04-S-HT-24	29	58
	6	(Prefix)-F 06-S-HT-24	30	60

\*Specify prefixes ALT, SPT, SHT or SST

## Fittings

### Horizontal Crosses

#### Part Numbering System

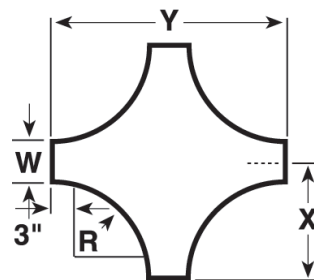


#### Selection Guide

Prefix: ALT (Alum.), SPT (Pregalv.), SHT (Hot-Dip Galv.), SST (Stainless Steel)  
 Inside Channel Widths: 01=1.5 in., 03=3 in., 04=4 in., 06=6 in.  
 Bottom Style: S– Solid



#### Horizontal Cross



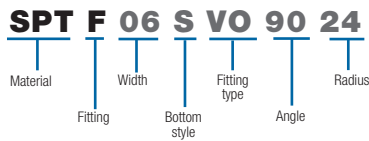
Radius (in.) <b>R</b>	Width (in.) <b>W</b>	Cat. No.	Dimensions (in.)	
			<b>X</b>	<b>Y</b>
<b>12</b>	1.5	(Prefix)-F 01-S-HX-12	15-3/4	31-1/2
	3	(Prefix)-F 03-S-HX-12	16-1/2	33
	4	(Prefix)-F 04-S-HX-12	17	34
	6	(Prefix)-F 06-S-HX-12	18	36
<b>24</b>	1.5	(Prefix)-F 01-S-HX-24	27-3/4	55-1/2
	3	(Prefix)-F 03-S-HX-24	28-1/2	57
	4	(Prefix)-F 04-S-HX-24	29	58
	6	(Prefix)-F 06-S-HX-24	30	60

\*Specify prefixes ALT, SPT, SHT or SST

## Fittings

### 90° Vertical Bends – Outside and Inside

#### Part Numbering System

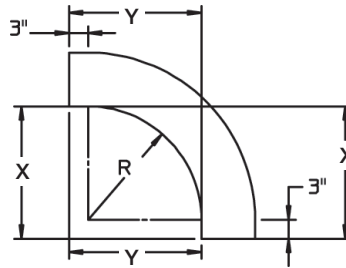


#### Selection Guide

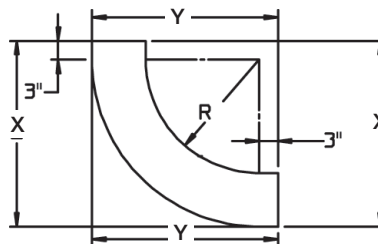
Prefix: ALT (Alum.), SPT (Pregalv.), SHT (Hot-Dip Galv.), SST (Stainless Steel)  
 Inside Channel Widths: 01=1.5 in., 03=3 in., 04=4 in., 06=6 in.  
 Bottom Style: S—Solid



#### Vertical Outside



#### Vertical Inside



#### 90° Vertical Outside BEND

Radius R (in.)	Width W (in.)	Cat. No.	Dimensions (in.)	
			X	Y
<b>12</b>	1.5	(Prefix)-F 01-S-V090-12	15	15
	3	(Prefix)-F 03-S-V090-12	15	15
	4	(Prefix)-F 04-S-V090-12	15	15
	6	(Prefix)-F 06-S-V090-12	15	15
<b>24</b>	1.5	(Prefix)-F 01-S-V090-24	15	15
	3	(Prefix)-F 03-S-V090-24	27	27
	4	(Prefix)-F 04-S-V090-24	27	27
	6	(Prefix)-F 06-S-V090-24	27	27

\*Specify prefixes ALT, SPT, SHT or SST

#### 90° Vertical Inside BEND

Radius R (in.)	Width W (in.)	Cat. No.	Dimensions (in.)	
			X	Y
<b>12</b>	1.5	(Prefix)-F 01-S-VI90-12	15-3/4	15-3/4
	3	(Prefix)-F 03-S-VI90-12	16-1/2	16-1/2
	4	(Prefix)-F 04-S-VI90-12	16-7/8	16-7/8
	6	(Prefix)-F 06-S-VI90-12	16-7/8	16-7/8
<b>24</b>	1.5	(Prefix)-F 01-S-VI90-24	27-3/4	27-3/4
	3	(Prefix)-F 03-S-VI90-24	28-1/2	28-1/2
	4	(Prefix)-F 04-S-VI90-24	28-7/8	28-7/8
	6	(Prefix)-F 06-S-VI90-24	28-7/8	28-7/8

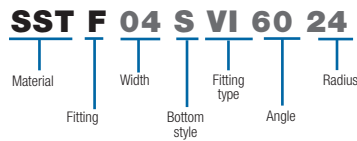
\*Specify prefixes ALT, SPT, SHT or SST



## Fittings

### 60° Vertical Bends – Outside and Inside

#### Part Numbering System

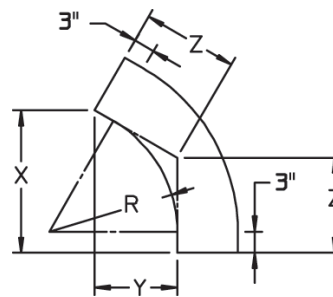


#### Selection Guide

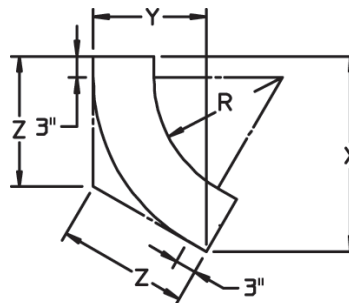
Prefix: ALT (Alum.), SPT (Pregalv.), SHT (Hot-Dip Galv.), SST (Stainless Steel)  
 Inside Channel Widths: 01=1.5 in., 03=3 in., 04=4 in., 06=6 in.  
 Bottom Style: S–Solid



#### Vertical Outside



#### Vertical Inside



Radius R (in.)	Width W (in.)	Cat. No.	Dimensions (in.)		
			X	Y	Z
<b>12</b>	1.5	(Prefix)-F 01-S-V060-12	14-7/8	8-5/8	9-7/8
	3	(Prefix)-F 03-S-V060-12	14-7/8	8-5/8	9-7/8
	4	(Prefix)-F 04-S-V060-12	14-7/8	8-5/8	9-7/8
	6	(Prefix)-F 06-S-V060-12	14-7/8	8-5/8	9-7/8
<b>24</b>	1.5	(Prefix)-F 01-S-V060-24	25-1/4	14-5/8	16-7/8
	3	(Prefix)-F 03-S-V060-24	25-1/4	14-5/8	16-7/8
	4	(Prefix)-F 04-S-V060-24	25-1/4	14-5/8	16-7/8
	6	(Prefix)-F 06-S-V060-24	25-1/4	14-5/8	16-7/8

\*Specify prefixes ALT, SPT, SHT or SST

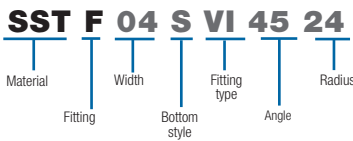
Radius R (in.)	Width W (in.)	Cat. No.	Dimensions (in.)		
			X	Y	Z
<b>12</b>	1.5	(Prefix)-F 01-S-VI60-12	15-1/2	9	10-1/4
	3	(Prefix)-F 03-S-VI60-12	16-1/8	9-1/4	10-3/4
	4	(Prefix)-F 04-S-VI60-12	16-1/4	9-3/8	10-7/8
	6	(Prefix)-F 06-S-VI60-12	16-3/8	9-1/2	11
<b>24</b>	1.5	(Prefix)-F 01-S-VI60-24	26	15	17-1/4
	3	(Prefix)-F 03-S-VI60-24	26-1/2	15-1/4	17-5/8
	4	(Prefix)-F 04-S-VI60-24	26-3/4	15-3/8	17-3/4
	6	(Prefix)-F 06-S-VI60-24	26-3/4	15-1/2	17-7/8

\*Specify prefixes ALT, SPT, SHT or SST

## Fittings

### 45° Vertical Bends – Outside and Inside

#### Part Numbering System

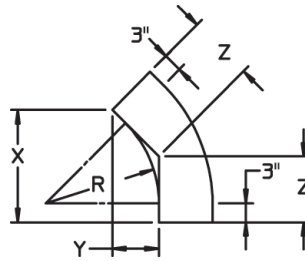


#### Selection Guide

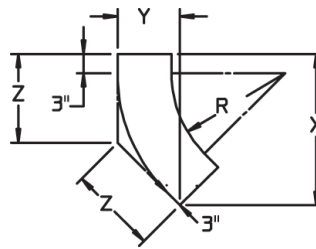
Prefix: ALT (Alum.), SPT (Pregalv.), SHT (Hot-Dip Galv.), SST (Stainless Steel)  
 Inside Channel Widths: 01=1.5 in., 03=3 in., 04=4 in., 06=6 in.  
 Bottom Style: S— Solid



#### Vertical Outside



#### Vertical Inside



#### 45° Vertical Outside BEND

Radius R (in.)	Width W (in.)	Cat. No.	Dimensions (in.)		
			X	Y	Z
<b>12</b>	1.5	(Prefix)-F 01-S-V045-12	13-5/8	5-5/8	8
	3	(Prefix)-F 03-S-V045-12	13-5/8	5-5/8	8
	4	(Prefix)-F 04-S-V045-12	13-5/8	5-5/8	8
	6	(Prefix)-F 06-S-V045-12	13-5/8	5-5/8	8
<b>24</b>	1.5	(Prefix)-F 01-S-V045-24	22-1/8	9-1/8	12-7/8
	3	(Prefix)-F 03-S-V045-24	22-1/8	9-1/8	13
	4	(Prefix)-F 04-S-V045-24	11	11	13
	6	(Prefix)-F 06-S-V045-24	11	11	13

#### 45° Vertical Inside BEND

Radius R (in.)	Width W (in.)	Cat. No.	Dimensions (in.)		
			X	Y	Z
<b>12</b>	1.5	(Prefix)-F 01-S-VI45-12	13-5/8	5-5/8	8
	3	(Prefix)-F 03-S-VI45-12	13-5/8	5-5/8	8
	4	(Prefix)-F 04-S-VI45-12	13-5/8	5-5/8	8
	6	(Prefix)-F 06-S-VI45-12	13-5/8	5-5/8	8
<b>24</b>	1.5	(Prefix)-F 01-S-VI45-24	22-1/8	9-1/8	12-7/8
	3	(Prefix)-F 03-S-VI45-24	22-1/8	9-1/8	13
	4	(Prefix)-F 04-S-VI45-24	11	11	13
	6	(Prefix)-F 06-S-VI45-24	11	11	13

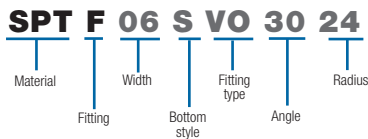
\*Specify prefixes ALT, SPT, SHT or SST

\*Specify prefixes ALT, SPT, SHT or SST

## Fittings

### 30° Vertical Bends – Outside and Inside

#### Part Numbering System

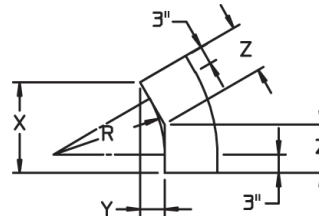


#### Selection Guide

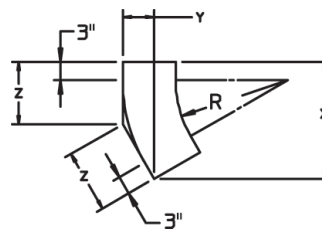
Prefix: ALT (Alum.), SPT (Pregalv.), SHT (Hot-Dip Galv.), SST (Stainless Steel)  
 Inside Channel Widths: 01=1.5 in., 03=3 in., 04=4 in., 06=6 in.  
 Bottom Style: S– Solid



#### Vertical Outside



#### Vertical Inside



#### 30° Vertical Outside BEND

Radius R (in.)	Width W (in.)	Cat. No.	Dimensions (in.)		
			X	Y	Z
<b>12</b>	1.5	(Prefix)-F 01-S-V030-12	10-1/8	1-7/8	5-1/4
	3	(Prefix)-F 03-S-V030-12	11-5/8	3-1/8	6-1/8
	4	(Prefix)-F 04-S-V030-12	11-5/8	3-1/8	6-1/8
	6	(Prefix)-F 06-S-V030-12	11-5/8	3-1/8	6-1/8
<b>24</b>	1.5	(Prefix)-F 01-S-V030-24	17-5/8	4-3/4	9-1/2
	3	(Prefix)-F 03-S-V030-24	17-5/8	4-3/4	9-1/4
	4	(Prefix)-F 04-S-V030-24	17-5/8	4-3/4	9-1/4
	6	(Prefix)-F 06-S-V030-24	17-5/8	4-3/4	9-1/4

\*Specify prefixes ALT, SPT, SHT or SST

#### 30° Vertical Inside BEND

Radius R (in.)	Width W (in.)	Cat. No.	Dimensions (in.)		
			X	Y	Z
<b>12</b>	1.5	(Prefix)-F 01-S-VI30-12	10-3/8	1-7/8	5-3/8
	3	(Prefix)-F 03-S-VI30-12	12-1/4	3-1/2	6-3/8
	4	(Prefix)-F 04-S-VI30-12	12-3/8	3-3/8	5-5/8
	6	(Prefix)-F 06-S-VI30-12	12-1/2	3-3/8	5-5/8
<b>24</b>	1.5	(Prefix)-F 01-S-VI30-24	18	4-3/4	9-5/8
	3	(Prefix)-F 03-S-VI30-24	18-1/4	4-7/8	9-3/4
	4	(Prefix)-F 04-S-VI30-24	18-3/8	4-7/8	9-7/8
	6	(Prefix)-F 06-S-VI30-24	18-1/2	5	9-7/8

\*Specify prefixes ALT, SPT, SHT or SST