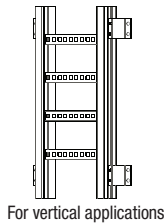


Clamps and Hardware

Hold Down Clamp



For vertical applications

Cat. No.	Type	Material	Design Load
ABW-HDCS	Single	Aluminum	600 lb./Pair
ABW-HDCD	Double		1000 lb./Pair

Cable Tray Combo Clamp



Cat. No.	Material	Hardware size (in.)
ABWCHGC	Aluminum	3/8
ABWCHGC-HDW*		

* Hardware supplied: 1 bolt and 1 springless strut nut 3/8 diameter.

Conduit Clamp



Cat. No.	Conduit Size (in.)	Material
ABW-100-CDO	1	Aluminum
ABW-125-CDO	1-1/4	
ABW-150-CDO	1-1/2	
ABW-200-CDO	2	
ABW-250-CDO	2-1/2	
ABW-300-CDO	3	
ABW-400-CDO	4	

Aluminum Tray Hardware



Square shoulder self-positioning carriage bolt.

Cat. No.	Material	Description
SPW-1/4-CB	Zinc plated steel	1/4 in. carriage bolt
SPW-3/8-CB		3/8 in. carriage bolt
SPW-1/4-HN		1/4 in. hex. nut
SPW-3/8-HN		3/8 in. hex. nut
SPW3/8HWK*	316 Stainless	Zinc plated steel hardware kit
SPW-3/8HXHWK**		Hardware kit 3/8 in. for large radius crosses
SSW-3/8-CB		3/8 in. carriage bolt
SSW-3/8-HN		3/8 in. hex. nut
SSW38HWK*	316 Stainless steel hardware kit	316 Stainless steel hardware kit
SSW-3/8HXHWK**		Hardware kit 3/8 in. for large radius crosses

*Contains 8 bolts and 8 nuts.

**Contains 6 bolts, 6 nuts and 6 washers.

Self-drilling – tapping screw

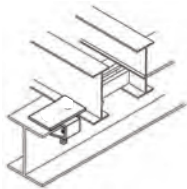
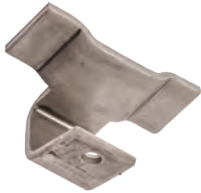


Cat. No.	Material	Description
SPW-10-SCR	Zinc plated steel	Self-drilling – tapping screw
SSW-10-SCR	Stainless steel	

T&B aluminum cable tray is composed of two distinct systems H-Style and U-Style. These systems are interchangeable.

Clamps and Hardware

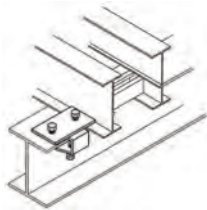
Cable Tray Guide



Cat. No.	Material
SPW-CTG	Zinc plated steel
SHW-CTG	Hot-dipped galvanized steel

Expansion guide for single or double runs of cable tray. No need to field drill the channel or I-beam.

Cable Tray Clamp



Cat. No.	Material
SPW-CTC	Zinc plated steel
SHW-CTC	Hot-dipped galvanized steel

Clamps for single run of cable tray. No need to field drill the channel or I-beam.

Vertical Tray Hanger



Cat. No.	Material	Side Rail Height (in.)
ABW(*)VTH	Aluminum	4
* Insert side rail height		5
		6
		7

T&B aluminum cable tray is composed of two distinct systems H-Style and U-Style. These systems are interchangeable.