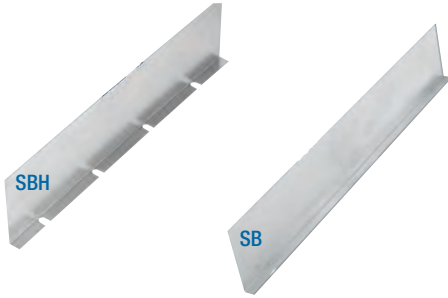


## Barrier Strips

### Barrier Strips



Cat. No.	Designed for Side Rail Height (in.)	Length
ABW-4-SBH-72	4	72 in.
ABW-5-SBH-72	5	
ABW-6-SBH-72	6	
ABW-7-SBH-72	7	
ABW-4-SB-*	4	144 in. 3 m
ABW-5-SB-*	5	
ABW-6-SB-*	6	
ABW-7-SB-*	7	

Aluminum barrier strips provide a method of separating cables in tray and trough systems. Easily installed using supplied hardware. 72 in. barriers are flexible for use with horizontal fittings.

NOTE: 72 in. barriers provided with 3 SPW10SCR. 144 in., 3 m barriers provided with 6 SPW10SCR.  
(\* ) Insert length.

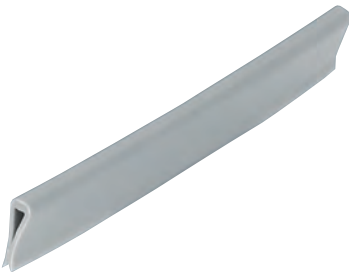
### Inside / Outside Vertical Bend Barriers



Inside Bend Cat. No.	Outside Bend Cat. No.	Designed for Side Rail Height (in.)
AUW(*)VIB-(**)-(+)	AUW(*)VOB-(**)-(+)	4
AUW(*)VIB-(**)-(+)	AUW(*)VOB-(**)-(+)	5
AUW(*)VIB-(**)-(+)	AUW(*)VOB-(**)-(+)	6
AUW(*)VIB-(**)-(+)	AUW(*)VOB-(**)-(+)	7
AHW(*)VIB-(**)-(+)	AHW(*)VOB-(**)-(+)	4
AHW(*)VIB-(**)-(+)	AHW(*)VOB-(**)-(+)	5
AHW(*)VIB-(**)-(+)	AHW(*)VOB-(**)-(+)	6
AHW(*)VIB-(**)-(+)	AHW(*)VOB-(**)-(+)	7

(\* ) Insert side rail height (\*\* ) Insert bend angle (+) Insert bend radius.

### Barrier Strip Splice



Cat. No.	Material
ABWBSS	Plastic

Alignment splice for joining connecting barrier strips.

T&B aluminum cable tray is composed of two distinct systems H-Style and U-Style. These systems are interchangeable.