

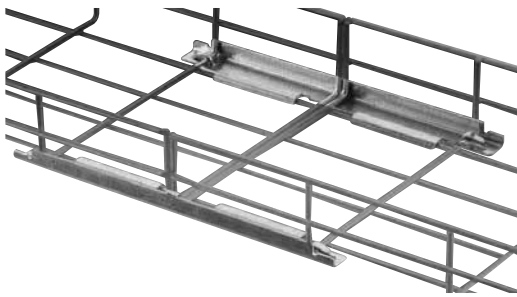
Splices

Quick splice

Connect straight lengths up to 24 in. wide using only two quick splices – no other components required. Simply bend tabs down and lock into position using pliers.

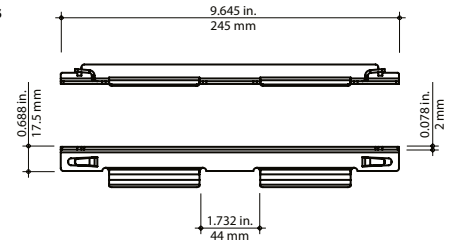
Compatible with all profiles, the quick splice is available in pregalvanized steel, hot-dipped galvanized steel and stainless steel (type 316).

Express tip: refer to page B39 for application example.
Tool required: pliers



Cat no.	Material	lb/ea.	Weight
			kg/ea.
ETH-QSP-PG	Pregalvanized steel	0.30	0.14
ETH-QSP-HD	Hot-dipped galvanized steel	0.30	0.14
ETH-QSP-S6	Stainless steel (type 316)	0.30	0.14

Diagrams



Universal splice

The most widely used connection method for non-radiused bends or joints, the universal splice is compatible with all profiles.

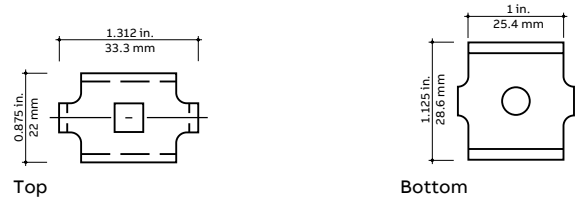
Available in electro-galvanized and hot-dipped galvanized steel as well as stainless steel (types 304 and 316).

Express tip: Refer to pages B39, B40, B43, B44 and B46 for application examples. Tool required: 10 mm nut driver



Cat no.	Material	lb/ea.	Weight
			kg/ea.
ETH-SP-EG	Electro-galvanized steel	0.13	0.06
ETH-SP-HD	Hot-dipped galvanized steel	0.13	0.06
ETH-SP-SS	Stainless steel (type 304)	0.13	0.06
ETH-SP-S6	Stainless steel (type 316)	0.13	0.06

Diagrams



Splices

Adjustable splice

Used to construct angles or bends with a radius, the adjustable splice is designed for ease of installation when field-producing bends. Installed on the inside radius, this splice adjusts up to 1/2 in. and is ideally suited for any application where adjustment may be necessary.

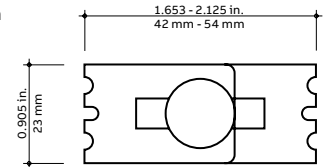
Compatible with all tray profiles, the adjustable splice is available in electro-galvanized, pregalvanized, hot-dipped galvanized and stainless steel (types 304 and 316).

Express tip: Refer to pages B41, B43 and B44 for application examples.
Tool required: 10 mm nut driver



Cat no.	Material	Weight	
		lb/ea.	kg/ea.
ETH-ADJSP-EG	Electro-galvanized steel	0.13	0.06
ETH-ADJSP-PG	Pregalvanized steel	0.13	0.06
ETH-ADJSP-HD	Hot-dipped galvanized steel	0.13	0.06
ETH-ADJSP-SS	Stainless steel (type 304)	0.13	0.06
ETH-ADJSP-S6	Stainless steel (type 316)	0.13	0.06

Diagram



Reinforcing splice bar

Used to reinforce connections of two straight sections of tray, the splice bar can also be cut to length using a bolt cutter and bent for use in tee or cross formations. Available in hot-dipped galvanized steel in two lengths.

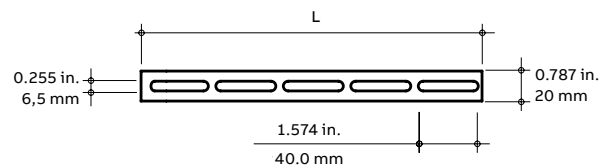
Splice bars can be ordered individually or as a kit that includes one (1) splice bar and three (3) bracket clamps (hot-dipped galvanized).

Express tip: Refer to page B39 for application example.
Tool required: 10 mm nut drive



Cat no.	Material	Length		Weight	
		in.	mm	lb/ea.	kg/ea.
ETH-SB11-HD	Single splice bar	10.6	270	0.62	0.28
ETH-SB11-KIT-HD	Splice bar kit*	10.6	270	0.86	0.39
ETH-SB40-HD	Single splice bar	39.3	1,000	1.78	0.81

Diagram



* Kit includes — 1 splice bar (ETH-SB11-HD) with 3 bracket clamps (ETH-WBC-HD)