

# Red Dot Weatherproof metallic lampholders

## Lampholder covers

### Round lampholder covers

- Heavy-duty die-cast construction
- Powder-coat finish in grey, bronze or white
- Three-hole cover is supplied with a ½" closure plug
- Supplied with sealing gasket and cover screw



S-12                      S213E-R

### Standard covers



Cat. no.	Colour	Hub size (in.)	Description	Std. ctn.
Gaskets and screws, 4½" diameter				
S-12	Grey	¾	One tapped hole	50
S211E	Grey	½	One tapped hole	18
S211BKE	Black	½	One tapped hole	18
S211BRE	Bronze	½	One tapped hole	12
S211WHE	White	½	One tapped hole	12
S213E-R	Grey	½	Three tapped holes	15
S213BRE	Bronze	½	Three tapped holes	9
S213WHE	White	½	Three tapped holes	9



SJ-11                      SJ-31

### Jumbo covers



Cat. no.	Colour	Hub size (in.)	Description	Std. ctn.
Gaskets and screws, 4½" diameter				
SJ-11	Grey	½	One tapped hole	36
SJ-31	Grey	½	Three tapped holes	36



S201E                      LC-21                      S203E-R

### Single-gang lampholder covers – standard 2¹³⁄₁₆" x 4¹⁄₂"



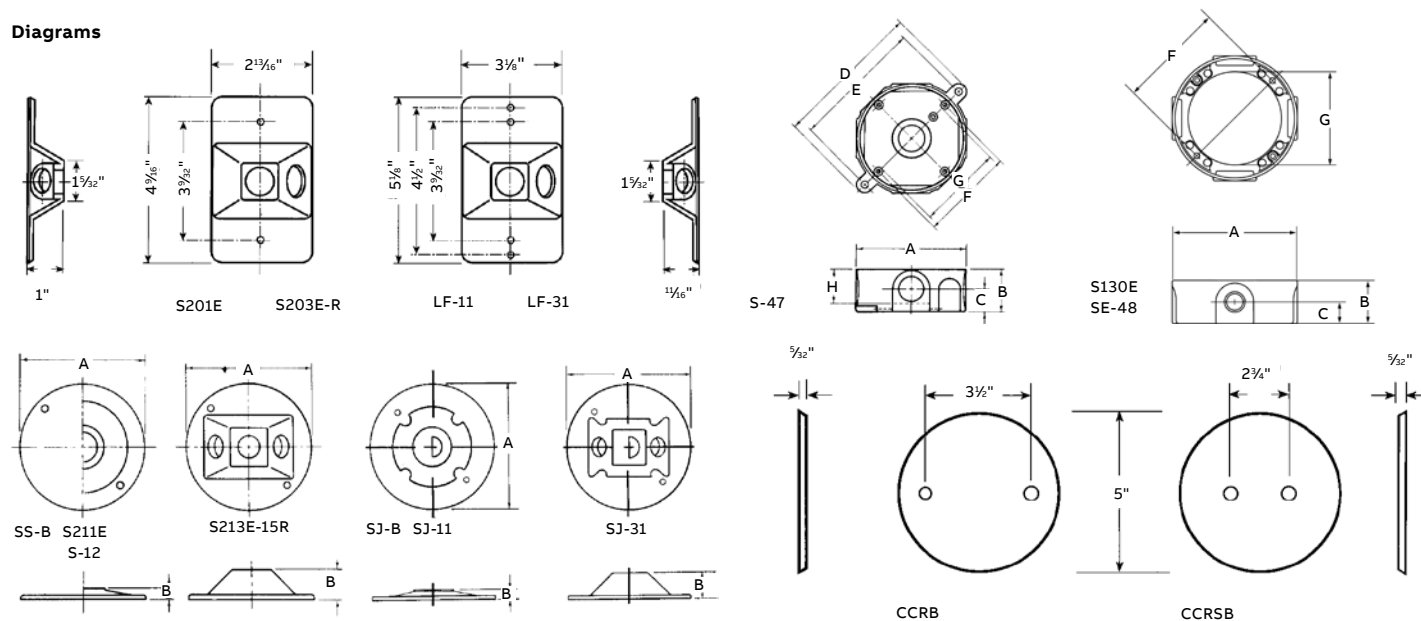
Cat. no.	Colour	Size (in.)	Description	Std. ctn.
S201E*	Grey	½	One-hole device mount	20
S203E-R	Grey	½	Three-hole device mount	15
S203BRE	Bronze	½	Three-hole device mount	7
S203WHE	White	½	Three-hole device mount	7

\*cULus

## Red Dot Weatherproof metallic lampholders

### Dimensions and photometrics

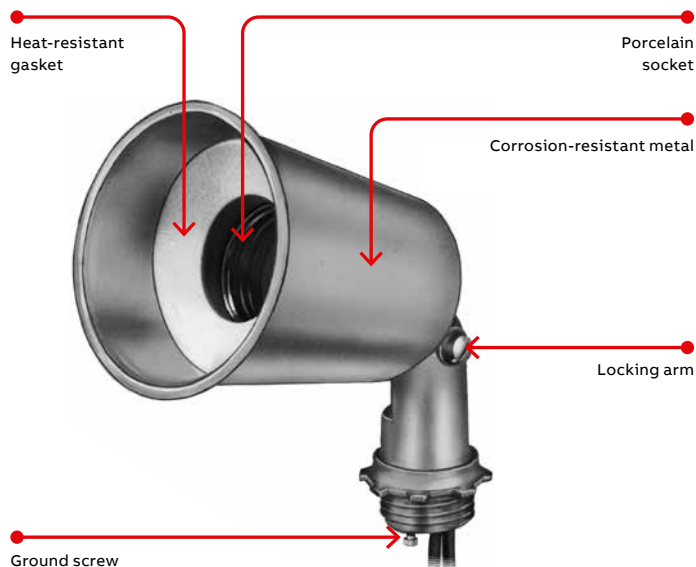
#### Diagrams



Cat. no.	Hub size	Dimensions (in.)								
		A	B	C	D	E	F	G	H	CI
S-47	½	4½	1½	¾	5⅞	4⅞	3½	3⅞	1¼	16.0
S130E	½	4½	1½	13/16	—	—	3½	3⅞	—	18.3
S-48	¾	4½	1½	7/8	5⅞	4⅞	3½	3⅞	1¼	17.0
SE-48	¾	4½	1½	13/16	—	—	3½	3⅞	—	18.3
SS-B	—	4½	3/64	—	—	—	—	—	—	—
S211E	½	4½	13/32	—	—	—	—	—	—	—
S-12	¾	4½	¾	—	—	—	—	—	—	—
S213E-15R	½	4½	11/16	—	—	—	—	—	—	—
SJ-B	—	4½	¾	—	—	—	—	—	—	—
SJ-11	½	4½	¾	—	—	—	—	—	—	—
SJ-31	½	4½	1	—	—	—	—	—	—	—

## Red Dot Weatherproof metallic lampholders

Lampholders, garden lights and accessories



S500EG-CN



S513EG-CN

### Applications:

- Security and general outdoor lighting fixture for residential and commercial applications
- Accent lighting fixture for highlighting outdoor signs and architectural details
- Compact outdoor lighting fixture that can be mounted easily in most places and aimed in any direction

### Features/benefits:

- Clean lines and precision manufacturing result in a fixture that will enhance any application
- High-quality replaceable porcelain socket with high-temperature leads enables easy field maintenance
- Positive-locking mounting arm keeps fixture in aimed position to reduce costly callbacks
- Ground screw boss in arm

### Standard materials:

- Fixture: Zinc die-cast alloy
- Gasket: Heat-resistant composition or high-temperature silicone
- Socket: Center contact, porcelain, medium base

### Standard finish:

- Powder-coated finish

### Compliances:

- UL listed and CSA certified
- Suitable for use in wet locations

## Red Dot Weatherproof metallic lampholders

### Lampholders and outlet box kits



S500EG-CN

#### Lampholders, die-cast zinc



Cat. no.	Colour	Wattage	Description	Std. ctn.
<b>Standard</b>				
S500BKEG-CN	Black	150W• PAR 38 or R40	Heavy-duty slip-on gasket and ground screw	20
S500BREG-CN	Bronze	150W• PAR 38 or R40	Heavy-duty slip-on gasket and ground screw	20
S500WHEG-CN	White	150W• PAR 38 or R40	Heavy-duty slip-on gasket and ground screw	20
S500EG-CN	Grey	150W• PAR 38 or R40	Heavy-duty slip-on gasket and ground screw	20



SPK6-P-GR

#### Spike lights (zinc)



Cat. no.	Finish	Description
SPK6-P-GR	Green	Portable lamp, 6' cord – metal
SPK6-P-BK	Black	Portable lamp, 6' cord – metal
SPK6-P-BR	Bronze	Portable lamp, 6' cord – metal



S513EG-CN

#### Decorative floodlight



Cat. no.	Colour	Wattage	Description	Std. ctn.
S513EG-CN	Grey	150W• PAR 38 or R40	Two lampholders, round cover, inside ground screws	8
S513BKEG-CN	Black	150W• PAR 38 or R40	Two lampholders, round cover, inside ground screws	8
S513BREG-CN	Bronze	150W• PAR 38 or R40	Two lampholders, round cover, inside ground screws	8
S513WHEG-CN	White	150W• PAR 38 or R40	Two lampholders, round cover, inside ground screws	8

## Red Dot Weatherproof metallic lampholders

Lampholders, outlet box kits and vaportight lighting



B228E-R

### Contemporary floodlight, aluminum



Cat. no.	Colour	Wattage	Description	Std. ctn.
B228E-R	Grey	150W	Two reflectors, round cover, gasket, hardware	2
B228BKE-R	Black	150W	Two reflectors, round cover, gasket, hardware	2
B228BRE-R	Bronze	150W	Two reflectors, round cover, gasket, hardware	2
B228WHE-R	White	150W	Two reflectors, round cover, gasket, hardware	2



S212G-CN

### Traditional floodlight



Cat. no.	Colour	Wattage	Description	Std. ctn.
S212G-CN	Grey	150W	Two lampholders, round cover, gasket, round box and hardware	4
S212BKG-CN	Black	150W	Two lampholders, round cover, gasket, round box and hardware	4
S212BRG-CN	Bronze	150W	Two lampholders, round cover, gasket, round box and hardware	4
S212WHG-CN	White	150W	Two lampholders, round cover, gasket, round box and hardware	4



S312E-CN

### Universal single-gang metallic duplex receptacle outlet box kit, weather- and tamper-resistant, horizontal or vertical

Cat. no.	Colour	Description	Std. ctn.
S312E-CN	Grey	Three ½ in. hubs, 18 cu. in.	4
S312BRE-CN	Bronze	Three ½ in. hubs, 18 cu. in.	4
S312WHE-CN	White	Three ½ in. hubs, 18 cu. in.	4



S315WHE-CN

### Universal single-gang metallic GFCI receptacle outlet box kit, weather- and tamper-resistant, horizontal or vertical

Cat. no.	Colour	Description	Std. ctn.
S315E-CN	Grey	Three ½ in. hubs, 18 cu. in.	4
S315WHE-CN	White	Three ½ in. hubs, 18 cu. in.	4



MCL150C

MCL150W

### Ceiling mount and wall mount



Cat. no.	Hub size (in.)	Wattage	Description
<b>Ceiling mount (5 holes)</b>			
MCL150C	1	150W	Can be surface mounted or mounted to a junction box. Kit includes: Aluminum housing, junction box, globe and guard assembly.
<b>Wall mount (5 holes)</b>			
MCL150W	1	150W	Can be surface mounted in a vertical position (globe pointed down only). Kit includes: Aluminum housing, junction box, globe and guard assembly.