

## BQ2 Series

200 A 600 V; standard enclosure

### Product specifications



- Conductor range: 6 AWG–250 kcmil
- Aluminum tunnel type connectors for both load and line sides
- For overhead, underground and combination overhead/underground

- Supplied with screw type ring
- Weatherproof Type 3R enclosure

Note: Supply from an underground network often requires use of stud type connector. Consult your local utility.



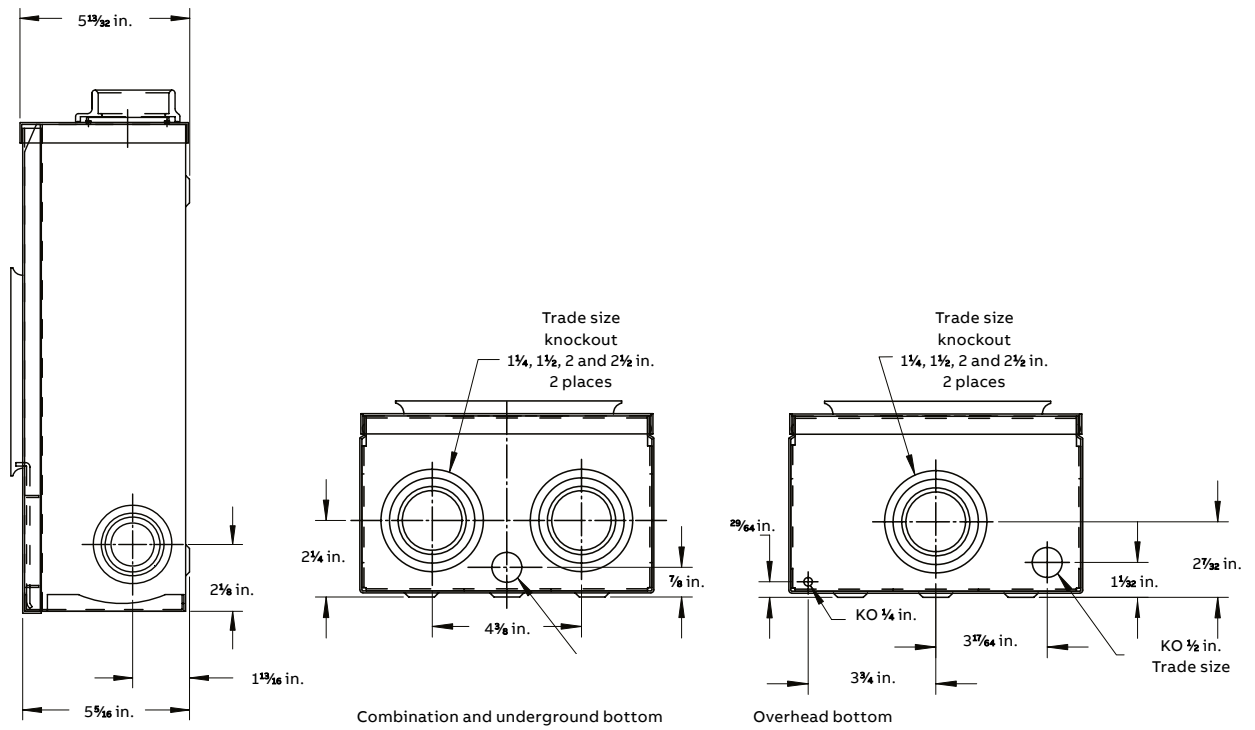
Approved for copper or aluminum

	Cat. no	Description	Dimensions (in.)			Weight each	
			H	W	D	lb	kg
	<b>4 Jaw</b>						
	BQ2-V	Overhead, hub opening	15 $\frac{5}{8}$	8 $\frac{47}{64}$	5 $\frac{13}{32}$	12	5.4
	BQ2-VGN	Overhead opening comes with ground lug on neutral	15 $\frac{5}{8}$	8 $\frac{47}{64}$	5 $\frac{13}{32}$	12	5.4
	BQ2-VGN-CR	Overhead comes with ground lug on neutral, corrosion resistant	15 $\frac{5}{8}$	8 $\frac{47}{64}$	5 $\frac{13}{32}$	12	5.4
	BQ2-2V	Overhead, hub opening, comes with 2 in. hub	15 $\frac{5}{8}$	8 $\frac{47}{64}$	5 $\frac{13}{32}$	12	5.4
	BQ2-2INV	Overhead, comes with 2 in. hub and insulated neutral	15 $\frac{5}{8}$	8 $\frac{47}{64}$	5 $\frac{13}{32}$	12	5.4
	BQ2-2VGN	Overhead, hub opening comes with 1 ½" hub and ground lug on neutral	15 $\frac{5}{8}$	8 $\frac{47}{64}$	5 $\frac{13}{32}$	12	5.4
	BQ2-TV	Underground	15 $\frac{5}{8}$	8 $\frac{47}{64}$	5 $\frac{13}{32}$	12	5.4
	BQ2-INTV	Underground, comes with insulated neutral	15 $\frac{5}{8}$	8 $\frac{47}{64}$	5 $\frac{13}{32}$	12	5.4
	BQ2-TVGN	Underground comes with ground lug on neutral	15 $\frac{5}{8}$	8 $\frac{47}{64}$	5 $\frac{13}{32}$	12	5.4
	BQ2-TCV	Combination, overhead-underground	15 $\frac{5}{8}$	8 $\frac{47}{64}$	5 $\frac{13}{32}$	12	5.4
	BQ2-TCV-CR	Combination overhead-underground, corrosion resistant	15 $\frac{5}{8}$	8 $\frac{47}{64}$	5 $\frac{13}{32}$	12	5.4
	BQ2-TCVGN	Combination overhead-underground comes with ground lug on neutral	15 $\frac{5}{8}$	8 $\frac{47}{64}$	5 $\frac{13}{32}$	12	5.4
	BQ2-TCVGN-CR	Combination overhead-underground comes with ground lug on neutral, corrosion resistant	15 $\frac{5}{8}$	8 $\frac{47}{64}$	5 $\frac{13}{32}$	12	5.4
	BQ2-22VNH	Overhead, twin hub opening	15 $\frac{5}{8}$	8 $\frac{47}{64}$	5 $\frac{13}{32}$	12	5.4
	BQ2-22INVNH	Overhead, twin hub opening, comes with insulated neutral	15 $\frac{5}{8}$	8 $\frac{47}{64}$	5 $\frac{13}{32}$	12	5.4
	BQ2-22VNHGN	Overhead, twin hub opening comes with ground lug on neutral	15 $\frac{5}{8}$	8 $\frac{47}{64}$	5 $\frac{13}{32}$	12	5.4
	BQ2-2VGN-CR	Overhead comes with ground lug on neutral, corrosion resistant	15 $\frac{5}{8}$	8 $\frac{47}{64}$	5 $\frac{13}{32}$	12	5.4
	BQ2-22V	Overhead, twin hub opening, comes with 2 in. hubs	15 $\frac{5}{8}$	8 $\frac{47}{64}$	5 $\frac{13}{32}$	12	5.4
	BQ2-22VGN	Overhead, twin hub opening comes with 2 in hubs and ground lug on neutral	15 $\frac{5}{8}$	8 $\frac{47}{64}$	5 $\frac{13}{32}$	12	5.4
	<b>Factory-installed accessories</b>						
	Include: -5						5 <sup>th</sup> jaw standard capacity

## BQ2 Series

200 A 600 V; standard enclosure

## Diagrams

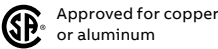


BP2-TV

200 A 240 V; standard enclosure

Product specifications

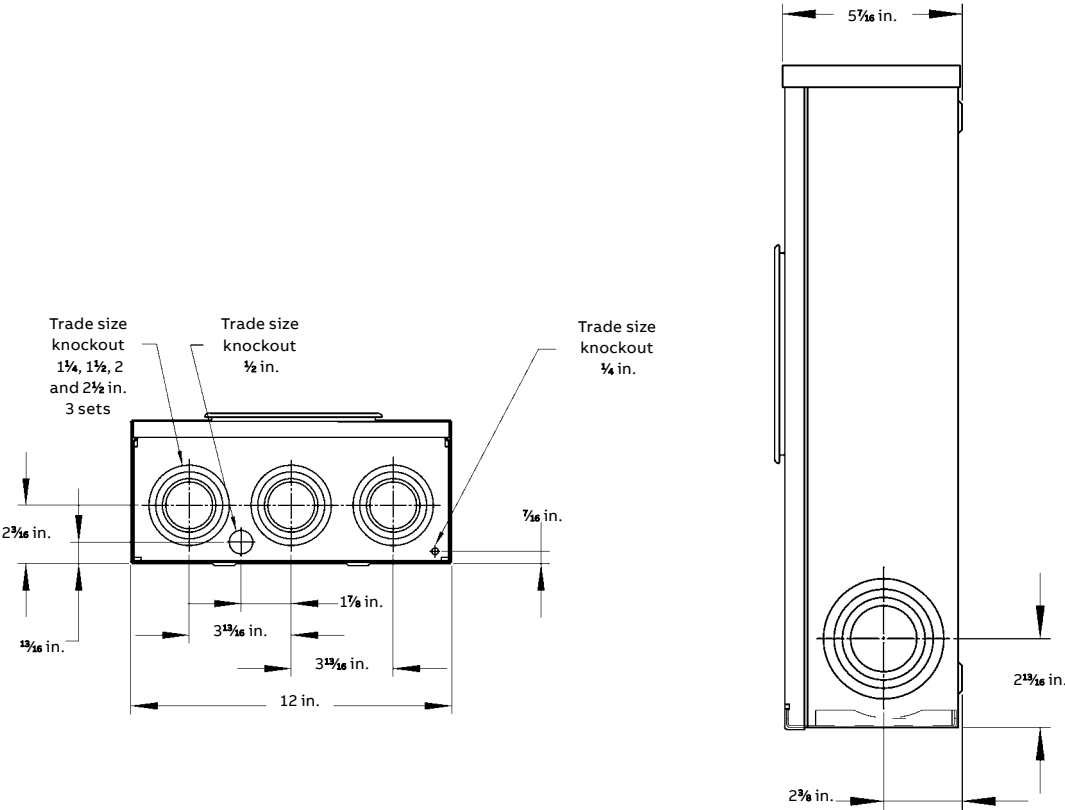
- Conductor range: 6 AWG–250 kcmil
  - Aluminum tunnel type connectors for both load and line sides
- For underground service only
  - Supplied with screw type ring
  - Weatherproof Type 3R enclosure



	Cat. no.	Description	Dimensions (in.)			Weight each	
			H	W	D	lb	kg
BP2-TV	BP2-TV	Underground	20	12	5 <sup>1</sup> / <sub>16</sub>	16.5	7.48



Diagrams



## BS2 Series

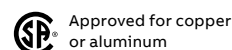
200 A 600 V; oversize enclosure



### Product specifications

- Conductor range: 6 AWG – 250 kcmil
- Aluminum tunnel type connectors for both load and line sides
- For overhead, underground and combination overhead/underground

- Supplied with screw type ring
- Weatherproof Type 3R enclosure

NOTE: Supply from an underground network often requires use of stud type connector. Consult your local utility.

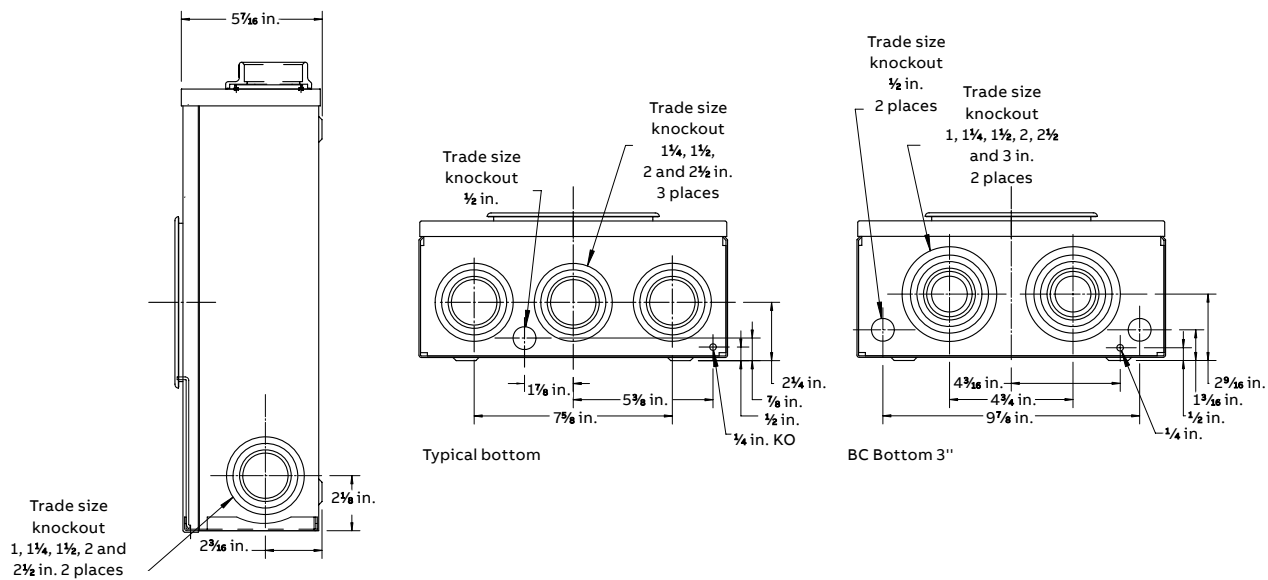


	Cat. no.	Description	Dimensions (in.)			Weight each	
			H	W	D	lb	kg
	<b>4 Jaw</b>						
	BS2-V	Overhead, hub opening	17⅞	12	5⅞	14	6.3
	BS2-INV	Overhead , hub opening comes with insulated neutral	17⅞	12	5⅞	14	6.3
	BS2-1 1/2 V	Overhead, hub opening, comes with 1½ in. hub	17⅞	12	5⅞	14	6.3
	BS2-1 1/2INV	Overhead, comes with 1½ in. hub and insulated neutral	17⅞	12	5⅞	14	6.3
	BS2-1 1/2VGN	Overhead, comes with 1½ in. hub and ground lug on neutral	17⅞	12	5⅞	14	6.3
	BS2-2V	Overhead, hub opening, comes with 2 in. hub	17⅞	12	5⅞	14	6.3
	BS2-2VGN	Overhead, comes with 2 in. hub and ground lug on neutral	17⅞	12	5⅞	14	6.3
	BS2-TV	Underground	17⅞	12	5⅞	14	6.3
	BS2-INTV	Underground comes with isolated neutral	17⅞	12	5⅞	14	6.3
	BS2-TCV	Combination, overhead-underground	17⅞	12	5⅞	14	6.3
	BS2-INTCV	Combination overhead-underground comes with isolated neutral	17⅞	12	5⅞	14	6.3
	BS2-TCVGN	Combination overhead-underground comes with ground lug on neutral	17⅞	12	5⅞	14	6.3
	BS2-TCVBC	Combination, overhead-underground comes with 3" ko	17⅞	12	5⅞	14	6.3
	BS2-TCVBC-CR	Combination overhead-underground comes with 3" ko	17⅞	12	5⅞	14	6.3
	BS2-INTCVBC	Combination, overhead-underground comes with 3" ko and insulated neutral	17⅞	12	5⅞	14	6.3
	BS2-TCVGNBC	Combination overhead-underground comes with ground lug on neutral	17⅞	12	5⅞	14	6.3
	BS2-22VNH	Overhead, twin hub opening	17⅞	12	5⅞	14	6.3
	BS2-22V	Overhead, twin hub opening, comes with 2 in. hubs	17⅞	12	5⅞	14	6.3
	<b>Factory-installed accessories</b>						
	Include: -5		5 <sup>th</sup> jaw, standard capacity, 9 o'clock position				

## BS2 Series

200 A 600 V; oversize enclosure

### Diagrams



BS2-TCVGNFA

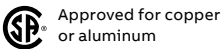
200 A, 120/240 V; single-phase service


Product specifications

- Line Side: 6 - 350 kcmil ,  
Load Side: Dual 6 - 4/0 kcmil
- Tunnel type connectors for both load and line sides
- For underground and above ground service

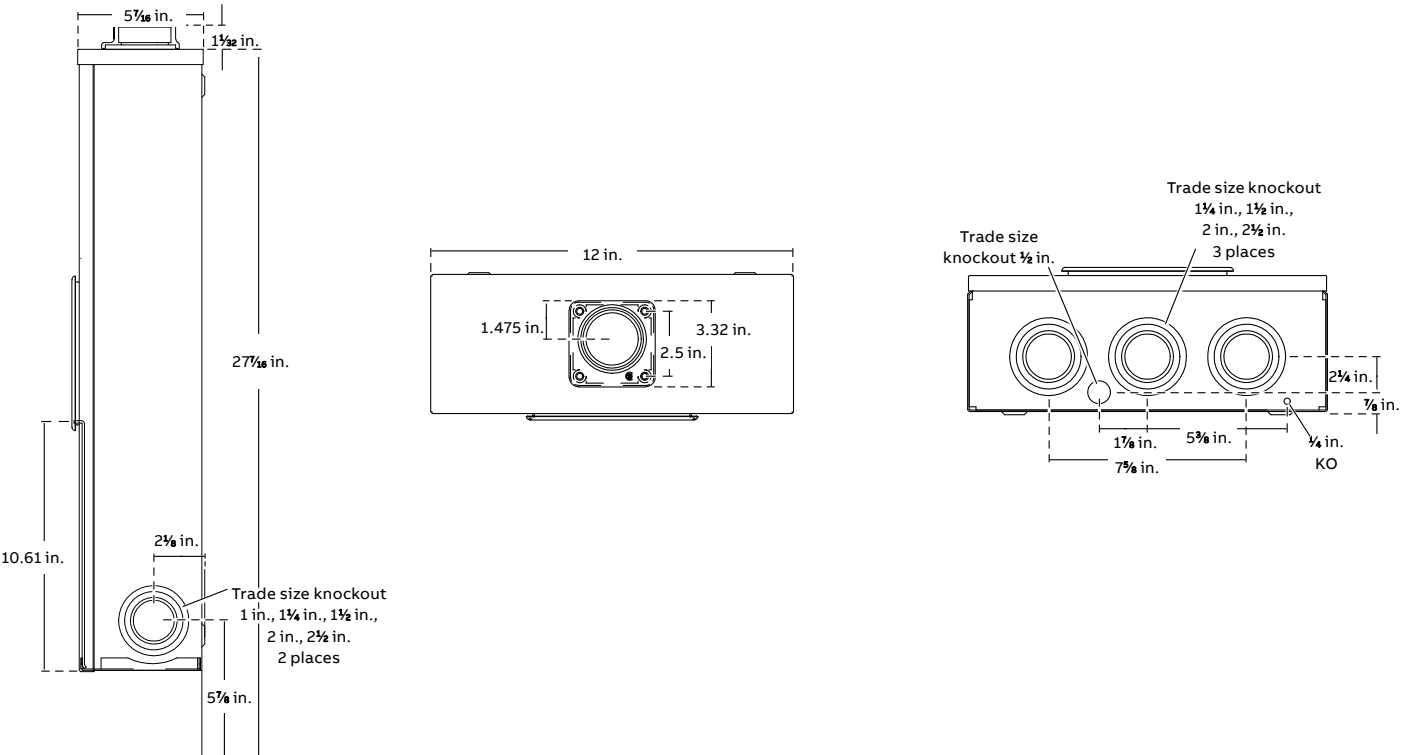
- Weatherproof Type 3R enclosure
- Designed and manufactured in Canada

Application: When distance is a factor, larger conductors require larger connectors.



	Cat. no.	Description	Dimensions (in.)			Weight Each	
			H	W	D	lb	kg
BS2-TCVGNFA	4 Jaw						
	BS2-TCVGNFA	Combination overhead-underground, comes with ground lug on neutral	27 <sup>7</sup> / <sub>16</sub>	12	5 <sup>7</sup> / <sub>16</sub>	14	6.3

Diagrams

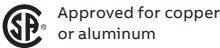



BS2L Series

200 A 600 V; oversize enclosure lay-in lug

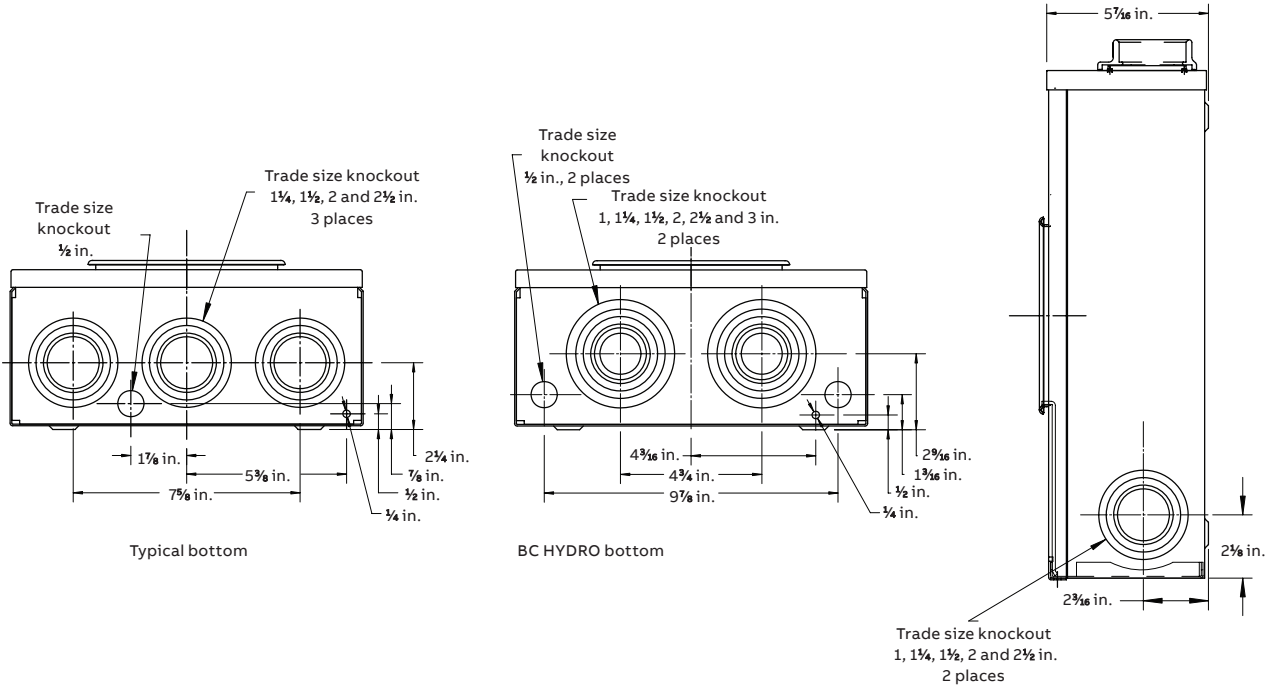
Product specifications

- Same as BS2 series with the exception that lay-in type connectors are provided
  - Conductor range: 6 AWG–250 kcmil
  - Aluminum lay-in type connectors for both load and line sides
- For overhead, underground and combination overhead/underground
  - Supplied with screw type ring
  - Weatherproof Type 3R enclosure



	Cat. no.	Description	Dimensions (in.)			Weight each	
			H	W	D	lb	kg
	4 Jaw						
	BS2L-TV	200 A underground with lay-in lugs	17½	12	5⅞	16	7.2
	BS2L-INTV	200 A underground with lay in lug, insulated neutral	17½	12	5⅞	16	7.2
	BS2L-TCV	200 A over/under combination with lay-in lugs	17½	12	5⅞	16	7.2
	BS2L-INTCV	200 A overhead/underground with lay in lugs, isolated neutral	17½	12	5⅞	16	7.2
	BS2L-INTCVBC	200 A overhead/underground with lay in lug, isolated neutral c/w 3" KO	17½	12	5⅞	16	7.2
	BS2L-TVGN	200 A underground with lay in lugs comes with ground lug on neutral	17½	12	5⅞	16	7.2
	BS2L-TCVGN	200 A overhead/underground with lay in lugs comes with ground lug on neutral	17½	12	5⅞	16	7.2
	BS2L-TCVGNBC	200 A overhead/underground with lay in lugs comes with ground lug on neutral C/W 3" KO	17½	12	5⅞	16	7.2
Factory-installed accessories							
Include: -5			5 <sup>th</sup> jaw standard capacity				

Diagrams

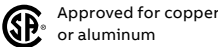


BS2M Series

200 A 600 V; oversize enclosure, subfeed on load side

- Product specifications

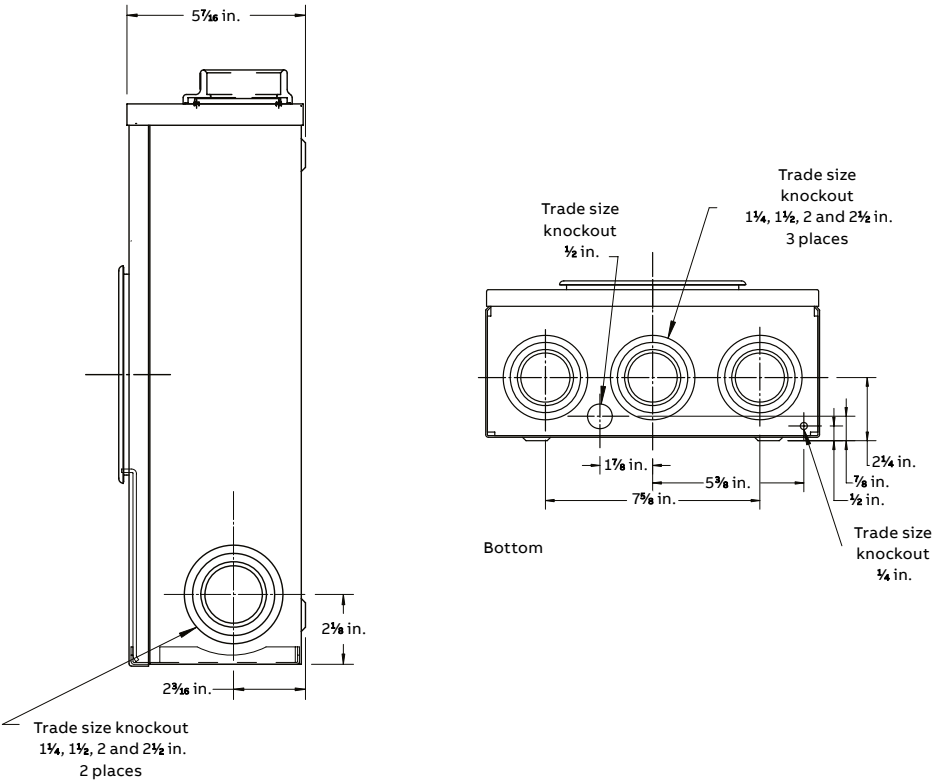
  - Conductor range: line: 6 AWG–250 kcmil, load: 12–1/0 AWG
  - Aluminum tunnel type connector for line side
  - For overhead service only
- Dual lug subfeed for load side
  - Supplied with screw type ring
  - Weatherproof Type 3R enclosure



	Cat. no.	Description	Dimensions (in.)			Weight each	
			H	W	D	lb	kg
			4 Jaw				
BS2M-VGN	BS2M-VGN	Overhead, comes with ground lug on neutral	17 <sup>3</sup> / <sub>8</sub>	12	5 <sup>7</sup> / <sub>16</sub>	15	6.8



Diagrams



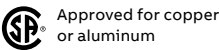



MO2 Series

200 A 600 V; underground only

Product specifications

- Conductor range: line: single ½ in. studs to accommodate compression lugs 350 kcmil max. (supplied by utility), load: 6 AWG–250 kcmil
  - For underground service only
- Aluminum tunnel type connectors for load side, ½ in. studs on line side
  - Supplied with screw type ring
  - Weatherproof Type 3R enclosure



	Cat. no.	Description	Dimensions (in.)			Weight each	
			H	W	D	lb	kg
	<b>4 Jaw</b>						
	MO2-V	Underground ½ in. studs	19⅞	12	5⅞ <sup>16</sup>	18	8.1
	MO2-INV	Underground ½ in. stud comes with isolated neutral	19⅞	12	5⅞ <sup>16</sup>	18	8.1
	MO2-VGN	Underground ½ stud come with ground lug on neutral	19⅞	12	5⅞ <sup>16</sup>	18	8.1
	MO2-VO	Underground ½ in. studs for Ontario	19⅞	12	5⅞ <sup>16</sup>	18	8.1
	MO2-INVO	Underground ½ in. stud for ontario comes with isolated neutral	19⅞	12	5⅞ <sup>16</sup>	18	8.1
	MO2M-INV	Underground ½ stud c/w 2/0 subfeed on load side and isolated neutral	19⅞	12	5⅞ <sup>16</sup>	18	8.1
	<b>Factory-installed accessories</b>						
Include: -M			2/0 AWG subfeed on load side				

Diagrams

