

## 1-, 2- and 3-Gang Rectangular floor box

Carlton rectangular floor box systems – three-way power, data and communications plus easy double- or triple-ganging, too.

Compared to metal boxes, Carlton rectangular floor boxes cost less and install faster to save you money on every job. Three-in-one power, data and communications capability cuts installation time and cost even more, while simple two- and three-gang modularity gives you the flexibility, installation ease and cost-savings no other nonmetallic boxes can match. The covers attach without the use of fasteners, providing a professional, clean installation as well as preserving the aesthetic life of the product. Take a closer look at all that our rectangular floor box systems offer you.

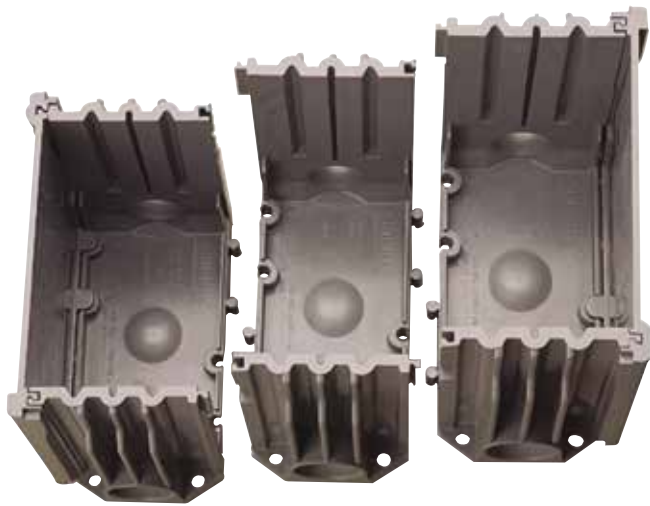
### Features and benefits:

- Covers require no adjusting collar – two screws ensure a flush, secure installation
- PVC construction, watertight gasket and corrosion-resistant hardware ensure long life and reliable performance, even in harsh and/or corrosive environments
- One consistent box depth simplifies ordering time and reduces inventory
- Saves time and money on installations with simple saw cut to floor level
- Concrete tight and suitable for any on-grade/below-grade application; concrete or wood subfloor construction approved
- Convenient cubic inch capacity markings on inside enable easy inspection
- PVC-molded ports and reducer plugs included
- Accepts 1/2", 3/4" and 1" conduit, tubing or raceway
- Rectangular sides are drillable
- Suitable for tile and carpet applications
- Cover options include solid brass, stainless steel and nonmetallic (brown, slate and caramel)
- UL/CSA scrubwater tested, approved for all types of finish flooring



## Gangable rectangular

### Floor box



#### Features and benefits:

With our rectangular boxes, one SKU is all you ever need. Simply remove appropriate sides and slide boxes together to create two- or three-gang boxes for unique on-the-job flexibility.

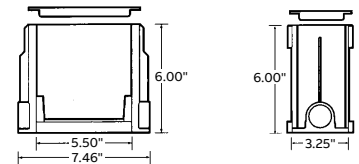
**For wood floor applications, box must be supported from below.**



Cat. No.	Material	Size	Internal volume (cu. in.)	Min. concrete depth	Hubs (in.)	Reducer plugs (in.)	Std. Ctn.	Std. Wt. (lb)
E976RFB	PVC	1-Gang	97.4 (16.8 per inch of depth)	3½	(2) 1	(2) 1 x ¾ (2) ¾ x ½	3	6.92



#### Diagrams



## Activation kit



Activation kit provides components to accommodate all standard power, data and communications devices, plus a divider to separate power from data and communications – all in a single SKU. Device yokes can be adjusted to store excess cord in the box.

Requires one kit per gang.



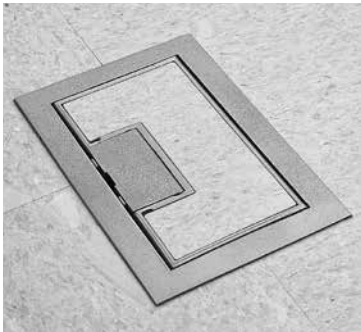
Cat. No.	Material	Std. Ctn.	Std. Wt. (lb)
E976AK2	PVC	3	2.47

1-, 2- and 3-gang nonmetallic  
Floor box covers

On-the-job flexibility extends to our rectangular box covers. Each one-, two- or three-gang cover is suitable for any wiring application and can be used with any floor surface. Nonmetallic covers are even field-reversible for tile or carpet. Double-door feature enables easy access to the device and helps keep stray cords organized.

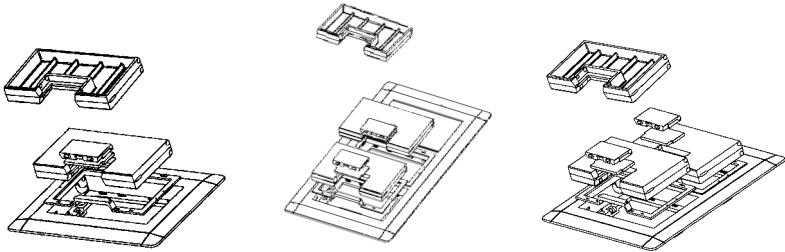
Carlton rectangular floor box covers do not require a separate carpet flange. The carpet flange is part of the cover and may be removed for tile application.

- Features and benefits:**
- High-impact resistant thermoplastic
  - Field reversible for tile or carpet
  - Gasketed for a watertight seal
  - Double-door design
  - UL/CSA scrubwater tested



Cat. No.	Size	Color	Carpet flange	Dimensions (w x L) (in.)	Std. Ctn.	Std. Wt. (lb)
E9761B	One-Gang	Brown	Included	7.13 x 5.00	3	1.7
E9762B	Two-Gang	Brown	Included	7.13 x 8.25	9	8.5
E9763B	Three-Gang	Brown	Included	7.13 x 11.50	6	7.5
E9761C	One-Gang	Caramel	Included	7.13 x 5.00	3	1.7
E9762C	Two-Gang	Caramel	Included	7.13 x 8.25	9	8.5
E9763C	Three-Gang	Caramel	Included	7.13 x 11.50	6	7.5
E9761S	One-Gang	Slate	Included	7.13 x 5.00	3	1.7
E9762S	Two-Gang	Slate	Included	7.13 x 8.25	9	8.5
E9763S	Three-Gang	Slate	Included	7.13 x 11.50	6	7.5

Diagrams

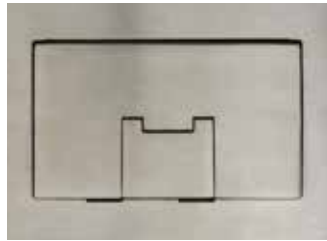


## 1-, 2- and 3-gang solid brass and Stainless steel floor box covers

Carlton brass and stainless steel rectangular floor box covers add a classic touch to all floor box installations, and are particularly suited for use in high-traffic areas because of the resistance to wear. The gasket gives a watertight seal, and the light lacquer finish provides extra protection.

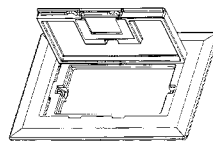
### Features and benefits:

- Rugged construction
- Coated with a light lacquer finish for extra protection
- Covers include a cord door
- Gasketed for watertight applications
- Accepts single, duplex, GFCI and low-voltage receptacles
- For tile and carpet applications
- UL/CSA scrubwater tested

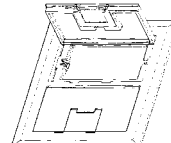


Cat. No.	Size	Color	Dimensions (in.)	Std. Ctn.	Std. Wt. (lb)
E9761BR	One-gang	Brass	7.13 x 5	3	6.8
E9762BR	Two-gang	Brass	7.13 x 8.25	3	9.9
E9763BR	Three-gang	Brass	7.13 x 11.5	3	12.1
E9761SS	One-gang	Stainless steel	7.13 x 5	3	7.4
E9762SS	Two-gang	Stainless steel	7.13 x 8.25	3	11.6
E9763SS	Three-gang	Stainless steel	7.13 x 11.5	3	17.2

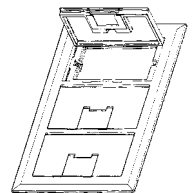
### Diagrams



One-gang



Two-gang



Three-gang