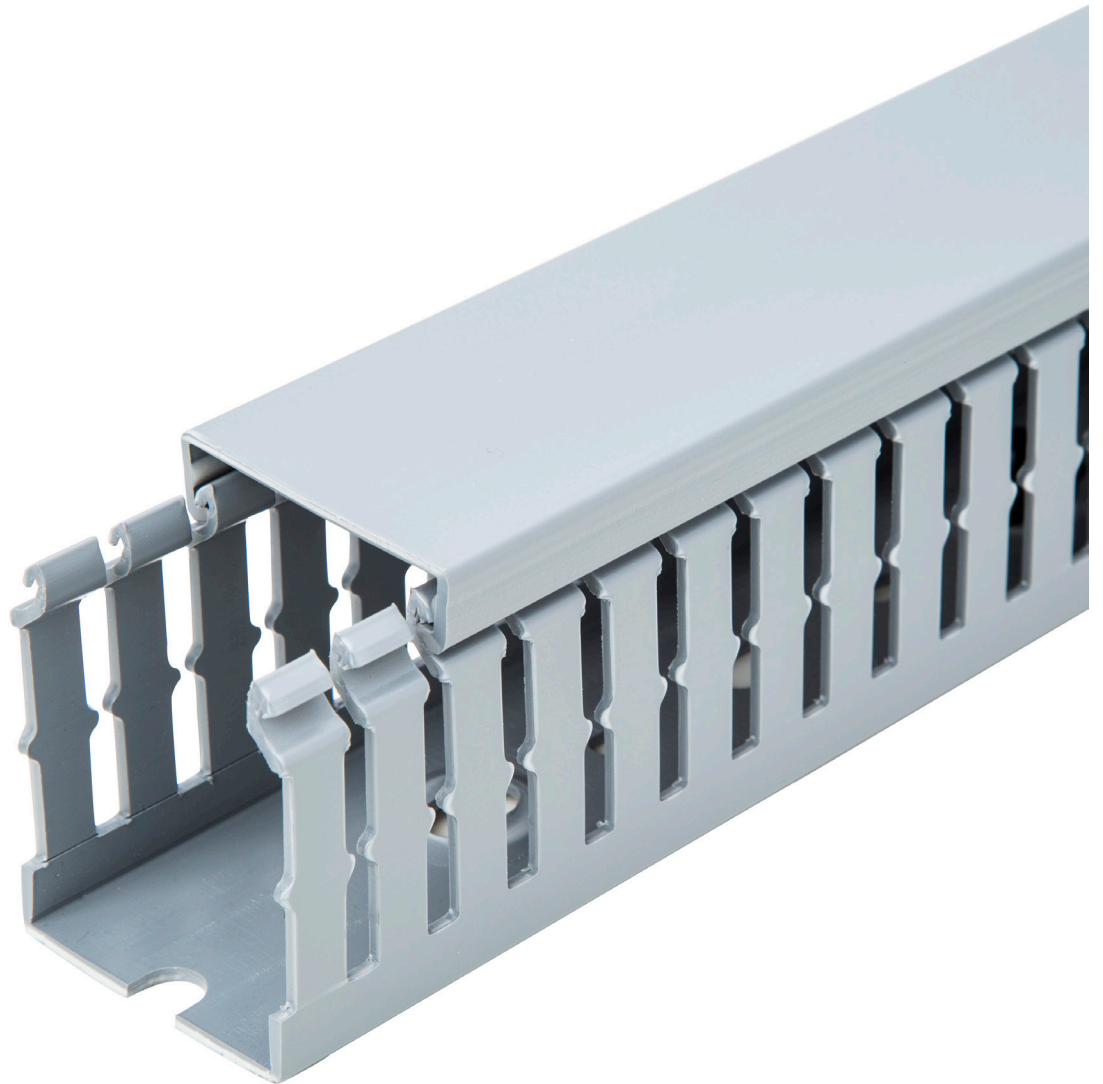


# ***Ty-Duct***<sup>™</sup>

Wiring duct  
Wire management made easy



# Ty-Duct™ Wiring Duct

## The versatile configurations you need for routing and concealing wiring

Thomas and Betts' innovative Ty-Duct products offer a total solution for routing and concealing wiring in control panels. Many different sizes and colors are available to accommodate anything from the smallest wallmount panel to the larger integrated systems.

These impressive features are incorporated into all of our wiring duct solutions:

### Why Ty-Duct™?

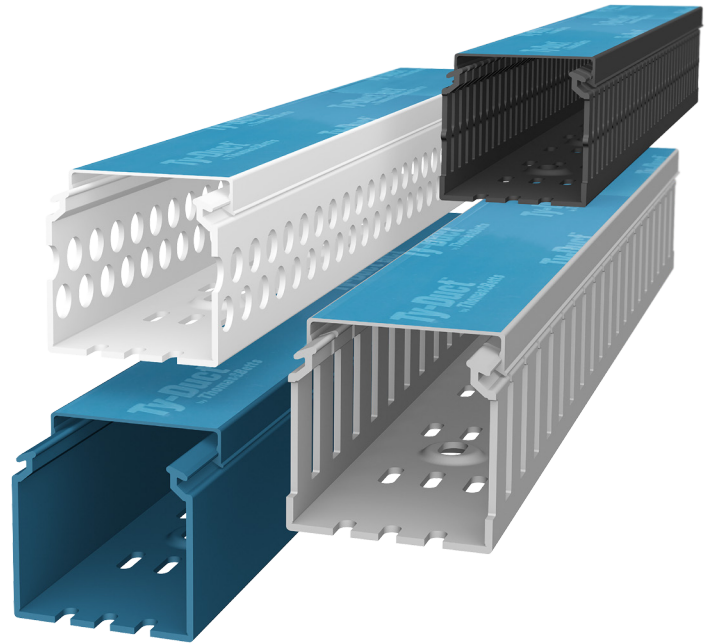
- Wide fingers and slots increase rigidity and speed insertion of wire bundles
- Non-slip cover stays in place—even under vibration
- Rounded edges protect hands and wires from accidental abrasion
- Dual score lines yield clean break-offs at base of slot and duct
- V-shaped slot lead-in enables easier and faster wire installation
- Integrated mounting holes—larger sizes include staggered holes for mounting flexibility
- Restricted slot design ensures that wires are held in place with or without the cover installed

### Features

- Available in Solid, Wide Slot, Narrow Slot, and Round Hole versions to meet your capacity and flexibility needs
- Widths from .75" to 6" and depths from 1" to 5"
- Optional adhesive back for quick, hassle-free installation
- Complete selection of accessories and tools for installation
- Lead-free construction
- Lightweight Halogen-free unit available for Wide Slot Wiring Duct
- Available in four colors—Gray, white, black and intrinsic blue

### Certifications

- UL® Recognized continuous-use temperature— 122° F (50° C)
- UL 94 Flammability — Rating of V-0
- Conforms with NFPA 79-2002 Section 14.3.1 Requirement for Flame Retardant Material
- CE compliant for European shipping
- CSA Certified
- RoHs Compliant



# Ty-Duct™ Wiring Duct

## Wire management made easy

### Ordering the Ty-Duct products you need is as easy as 1, 2, 3

After selecting the appropriate Ty-Duct solutions for your application, make sure you complete the following checklist.

### For Ty-Duct wiring duct and covers:

- 1 Specify color
- 2 Indicate if you want the duct without mounting holes
- 3 Indicate if you want an adhesive-backed duct (not available with halogen-free duct)

[ ] = space for color identifier:

G = Gray



I = Intrinsic blue



W = White



B = Black



- 3 To order adhesive-backed duct, add suffix A to Catalog Number. Example: TYD75x15WPB6A is a 0.75" x 1.5" wide slot black duct with adhesive backing. Shelf life for adhesive is 1 year.
- 2 To order duct without mounting holes, add suffix NM to catalog number. Example: TYD75X1WPG6NM is a 0.75" x 1" wide slot gray duct with no mounting holes.

Cat. no.	Description	Nominal width x nominal height Size (W x H)		Cover cat. no.	Standard carton quantity		
		In.	mm		Duct std. ctn. qty.	Cover std. ctn. qty.	Length (ft.)
TYD75X1WPG6NM	0.75 x 1 wide slot duct	0.94 x 1.09	23.9 x 27.7	TYD75CP_6	120	120	6
TYD75X15WP[B]6A	0.75 x 1.5 Wide slot duct	0.94 x 1.56	23.9 x 39.6		120		
TYD75X2[WP][I]6	0.75 x 2 wide slot duct	0.94 x 2.07	23.9 x 52.6		120		

SP = Solid  
WP = Wide slot  
NP = Narrow slot  
RP = Round hole

- 1 Catalog number must be completed by adding suffix G for gray, W for white, I for intrinsic blue, B for black. Example: TYD75x2WPI6 is a 0.75" x 2" wide slot intrinsic blue duct. Cover color must be specified also.

Standard lengths are 6 feet.

### For Ty-Duct dividers:

Catalog number must be completed by adding suffix S for solid or W for wide slot. Example: TY2DSPG6 is a 2" high solid wall gray divider.

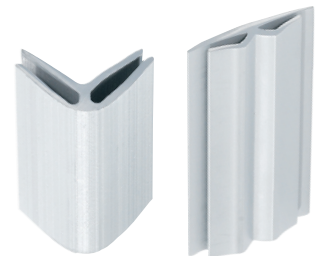


Cat. No.	Description	Length (ft.)	Std. ctn. qty
TY2D[SP][G]6	2" High wall divider	6	120

Catalog number must be completed by adding suffix G for gray, W for white, I for intrinsic blue, B for black. Example: TY2DSPG6 is a 2" high solid wall gray divider.

### For Ty-Duct corner and joining strips:

Corner strip sample shown below. Joining strips are ordered the same way.



Cat. No.	Description	Length (ft.)	Std. ctn. qty
TYCS[G]6	Corner strip	6	120

Catalog number must be completed by adding suffix G for gray, W for white, I for intrinsic blue, B for black. Example: TYCSG6 is a gray corner strip.

# Ty-Duct™ Wiring Duct

## Trust Thomas & Betts for all your wiring accessories

### Accessories include:

- Divider walls, enabling multiple channels to be created within a duct channel
- Universal mounting clips that secure channels and wires
- Corner strips that keep corners rigid at tee junctions when used for control panel applications
- Joining strips to unite sections of duct and keep the wall rigid
- Plastic rivets for securing ducts quickly and easily

### Type 316 Stainless Steel mounting clip for Ty-Duct™ wiring duct

Cat No.	Fits duct trade size	Clip dimensions (D x H) in.	Clip dimensions (D x H) mm	Std. ctn qty
TY1MC	1" W	.75 x .35	19.1 x 8.9	100
TY15MC	1½" W	.75 x .35	19.1 x 8.9	100
TY2MC	2" W	.75 x .35	19.1 x 8.9	100
TY3MC	3" W	.75 x .35	19.1 x 8.9	100

### Ty-Duct Divider Wall

Cat No.	Description	Length (ft)	Length (m)	Std. ctn qty
TY1[ ][ ]_6	1" High wall divider	6	1.83	120
TY1.5D[ ][ ]_6	1.5" High wall divider	6	1.83	120
TY2D[ ][ ]_6	2" High wall divider	6	1.83	120
TY3D[ ][ ]_6	3" High wall divider	6	1.83 </td <td>120</td>	120
TY4D[ ][ ]_6	4" High wall divider	6	1.83	120
TY5D[ ][ ]_6	5" High wall divider	6	1.83	120

Catalog Number must be completed by adding suffix SP for Solid or WP for Wide slot. Example: TY2DSPG6 is a 2" "high solid wall gray divider"

### Universal Mounting Clips

Cat No.	Description	Qty
UMC	Universal Fastener Mount	100 pk

### Corner Strips

Cat No.	Description	Length (ft)	Length (m)	Std. ctn qty
TYCS[ ][ ]_6	Corner Strip	6	1.83	120

Catalog number must be completed by adding suffix G for Gray, W for White, I for Intrinsic blue, B for Black. Example: TYCSG6 is a gray corner strip

### Joining Strips

Cat No.	Description	Length (ft)	Length (m)	Std. ctn qty
TYJS[ ][ ]_6	Joining Strip	6	1.83	120

Catalog number must be completed by adding suffix G for Gray, W for White, I for Intrinsic blue, B for Black. Example: TYJCG6 is a gray joining strip

### Wire Retainers

Cat No.	Description	Qty
TYWR[ ][ ]	Duct wire retainer	50

Catalog number must be completed by adding suffix G for gray or C for clear. Example: TYWRG is a gray wire retainer

### Plastic Rivets

Cat No.	Description	Qty
08200C	3/16" Plastic Rivet	100 pk



Please ask your Thomas & Betts sales representative for a complete catalog of quality Thomas & Betts electrical products or visit us at [www.tnb.ca](http://www.tnb.ca). For customer service, call 1-800-362-2952.

© 2017 Thomas & Betts Corporation. All rights reserved. Printed in Canada  
03/17/5100 TDP414b-E

Thomas & Betts Limited  
700 Thomas Avenue  
Saint-Jean-sur-Richelieu,  
Quebec J2X 2M9  
Tel.: (450) 347-5318  
Fax: (450) 347-1976  
[www.tnb.ca](http://www.tnb.ca)

**Thomas & Betts**  
A Member of the ABB Group