

# Optimum design to allow a reliable termination of Al or Cu conductors



Introducing the long pin terminal from Blackburn<sup>®</sup>. It was developed in response to the lack of space faced by electricians when upgrading the quality of mechanical terminations. It's designed for use in confined or limited spaces.

Ease the transition of cabling to circuit breakers, panel boards, meter sockets and other electrical switching equipment.

- Easily transition large aluminum cables into mechanical lugs
- Simplify installations in tight working spaces
- Knurled pins provide a solid contact area to ensure low-resistance connection
- Manufactured from high-conductivity aluminum alloy
- Tin plated to eliminate the possibility of galvanic corrosion
- Pre-filled with oxide inhibitor to ensure airtight termination
- Kitted with an insulating boot to eliminate taping

Dual-rated

Accepts conductors up to 1000 kcmil

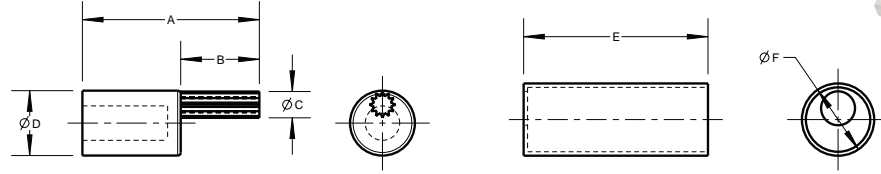
Rated for 600 V and 90°C



Thomas & Betts. Your best connection for innovative solutions.

**Only five dies needed to terminate the complete family of connectors from #6 to 1000 kcmil!**

Material: High-conductivity aluminum alloy  
 Plating: Electro-tin plated  
 Insulating boot: EPDM rubber except  
 OAPA-1000 boot is PVC

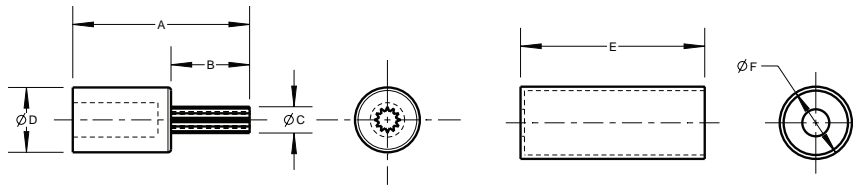


**Offset pin style**

CAT. NO.	WIRE SIZE	A OVERALL LENGTH (IN.)	B PIN LENGTH (IN.)	C PIN DIA. (IN.)	D BARREL DIA. (IN.)	E BOOT LENGTH (IN.)	F BOOT DIAMETER (IN.)	DIE/COLOUR CODE
OAPA-2/0	2/0 AWG	2.21	0.84	0.33	0.85	3.22	1.08	66/White
OAPA-3/0	3/0 AWG	2.59	1.22	0.37	0.85	3.22	1.08	66/White
OAPA-4/0	4/0 AWG	2.59	1.22	0.42	0.85	3.22	1.08	66/White
OAPA-250	250 kcmil	2.63	1.22	0.47	1.10	3.50	1.30	87/Brown
OAPA-300	300 kcmil	2.75	1.34	0.53	1.10	3.50	1.30	87/Brown
OAPA-350	350 kcmil	2.75	1.34	0.57	1.10	3.50	1.30	87/Brown
OAPA-400	400 kcmil	3.63	1.60	0.68	1.32	3.75	1.47	99/Pink
OAPA-500	500 kcmil	3.63	1.60	0.68	1.32	3.75	1.47	99/Pink
OAPA-600	600 kcmil	3.67	1.64	0.73	1.46	4.06	1.72	115/Yellow
OAPA-750	750 kcmil	3.79	1.76	0.81	1.46	4.06	1.72	115/Yellow
OAPA-1000	1000 kcmil	4.03	2.00	0.90	1.70	3.33	2.04	140/-

**Also Available:**

Material: High-conductivity aluminum alloy  
 Plating: Electro-tin plated  
 Insulating boot: EPDM rubber except  
 APA-1000 boot is PVC



**Center pin style**

CAT. NO.	WIRE SIZE	A OVERALL LENGTH (IN.)	B PIN LENGTH (IN.)	C PIN DIA. (IN.)	D BARREL DIA. (IN.)	E BOOT LENGTH (IN.)	F BOOT DIAMETER (IN.)	DIE/COLOUR CODE
APA-6	#6 AWG	1.85	0.68	0.24	0.60	3.06	0.81	50/Tan
APA-4	#4 AWG	1.85	0.68	0.24	0.60	3.06	0.81	50/Tan
APA-2	#2 AWG	1.85	0.68	0.24	0.60	3.06	0.81	50/Tan
APA-1	#1 AWG	2.01	0.84	0.26	0.60	3.06	0.81	50/Tan
APA-1/0	1/0 AWG	2.21	0.84	0.29	0.85	3.22	1.08	66/White
APA-2/0	2/0 AWG	2.21	0.84	0.33	0.85	3.22	1.08	66/White
APA-3/0	3/0 AWG	2.59	1.22	0.37	0.85	3.22	1.08	66/White
APA-4/0	4/0 AWG	2.59	1.22	0.42	0.85	3.22	1.08	66/White
APA-250	250 kcmil	2.63	1.22	0.47	1.10	3.50	1.30	87/Brown
APA-300	300 kcmil	2.75	1.34	0.53	1.10	3.50	1.30	87/Brown
APA-350	350 kcmil	2.75	1.34	0.57	1.10	3.50	1.30	87/Brown
APA-400	400 kcmil	3.63	1.60	0.68	1.32	3.75	1.47	99/Pink
APA-500	500 kcmil	3.63	1.60	0.68	1.32	3.75	1.47	99/Pink
APA-600	600 kcmil	3.67	1.64	0.73	1.46	4.06	1.72	115/Yellow
APA-750	750 kcmil	3.79	1.76	0.81	1.46	4.06	1.72	115/Yellow
APA-1000	1000 kcmil	4.03	2.00	0.90	1.70	3.33	2.04	140/-

**Atlantic Provinces**

Thomas & Betts Limited  
 Tel.: (902) 450-1307  
 Toll Free: 1-877-862-4357  
 Fax: (902) 450-1309

**Quebec**

Thomas & Betts Limited  
 Tel.: (450) 466-1102  
 Toll Free: 1-800-465-1399  
 Fax: (450) 466-1163

**Ontario**

Thomas & Betts Limited  
 Tel.: (905) 635-7888  
 Toll Free: 1-877-291-7771  
 Fax: (905) 635-7889

**Manitoba/Saskatchewan**

Thomas & Betts Limited  
 Tel.: (604) 598-9811  
 Toll Free: 1-866-540-8220  
 Fax: (604) 598-9840

**Alberta**

Thomas & Betts Limited  
 Tel.: (780) 424-7092  
 Toll Free: 1-888-664-5666  
 Fax: (780) 424-7093  
 Toll Free: 1-866-424-4082

**British Columbia**

Thomas & Betts Limited  
 Tel.: (604) 598-9811  
 Toll Free: 1-866-540-8220  
 Fax: (604) 598-9840

