

## Heavy-duty battery connectors and tools



**Material** – High-conductivity copper

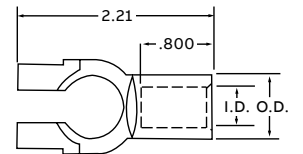
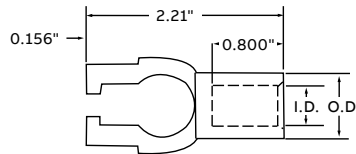
**Finish** – Electro tin plated

**Installing tools** – TBM5-SV, TBM5V, TBM8250S

### Tin-plated straight battery connectors

Cat. no.	Bulk cat. no.	SAE cable size (gauge)	Description	I.D. (in.)	O.D. (in.)	Pkg. qty.	Bulk pkg. qty.	Colour code
BAC4SUBT	BAC4SUBT-C	4	Straight Universal	0.261	0.430	5	100	Grey
BAC2SUBT	BAC2SUBT-C	2	Straight Universal	0.340	0.550	5	100	Green
BAC1SUBT	BAC1SIBT-C	1	Straight Universal	0.340	0.550	5	100	Pink
BAC10SUBT	BAC10SUBT-C	1/0	Straight Universal	0.455	0.625	5	100	Black
BAC20SUBT	BAC20SUBT-C	2/0	Straight Universal	0.502	0.676	5	100	Orange
BAC30SUBT	BAC30SUBT-C	3/0	Straight Universal	0.530	0.730	5	100	Purple
BAC40SUBT	BAC40SUBT-C	4/0	Straight Universal	0.600	0.844	5	100	Yellow
BAC4SPBT	BAC4SPBT-C	4	Straight Positive	0.261	0.430	5	100	Grey
BAC4SNBT	BAC4SNBT-C	4	Straight Negative	0.261	0.430	5	100	Grey
BAC2SPBT	BAC2SPBT-C	2	Straight Positive	0.340	0.550	5	100	Green
BAC2SNBT	BAC2SNBT-C	2	Straight Negative	0.340	0.550	5	100	Green
BAC1SPBT	BAC1SPBT-C	1	Straight Positive	0.340	0.550	5	100	Pink
BAC1SNBT	BAC1SNBT-C	1	Straight Negative	0.340	0.550	5	100	Pink
BAC10SPBT	BAC10SPBT-C	1/0	Straight Positive	0.455	0.625	5	100	Black
BAC10SNBT	BAC10SNBT-C	1/0	Straight Negative	0.455	0.625	5	100	Black
BAC20SPBT	BAC20SPBT-C	2/0	Straight Positive	0.502	0.676	5	100	Orange
BAC20SNBT	BAC20SNBT-C	2/0	Straight Negative	0.502	0.676	5	100	Orange
BAC30SPBT	BAC30SPBT-C	3/0	Straight Positive	0.530	0.730	5	100	Purple
BAC30SNBT	BAC30SNBT-C	3/0	Straight Negative	0.530	0.730	5	100	Purple
BAC40SPBT	BAC40SPBT-C	4/0	Straight Positive	0.600	0.844	5	100	Yellow
BAC40SNBT	BAC40SNBT-C	4/0	Straight Negative	0.600	0.844	5	100	Yellow

### Diagrams



## Heavy-duty battery connectors and tools



**Material** – High-conductivity copper

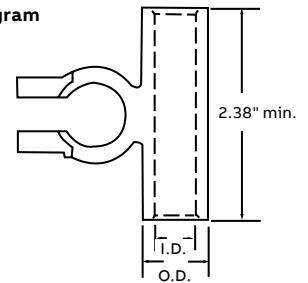
**Finish** – Electro tin plated

**Installing tools** – TBM5-SV, TBM5V

### Tin-plated flag battery connectors

Cat. no.	Bulk cat. no.	SAE cable size (gauge)	Description	I.D. (in.)	O.D. (in.)	Pkg. qty.	Bulk pkg. qty.	Colour code
BAC10FU	BAC10FNBL	1/0	Flag Universal	0.455	0.625	5	100	Black
BAC20FU	BAC20FNBL	2/0	Flag Universal	0.502	0.676	5	100	Orange
BAC30FU	BAC30FNBL	3/0	Flag Universal	0.530	0.730	5	100	Purple
BAC40FU	BAC40FNBL	4/0	Flag Universal	0.600	0.844	5	100	Yellow
BAC10FPBT	BAC10FPBT-C	1/0	Flag Positive	0.455	0.625	5	100	Black
BAC10FNBT	BAC10FNBT-C	1/0	Flag Negative	0.455	0.625	5	100	Black
BAC20FPBT	BAC20FPBT-C	2/0	Flag Positive	0.502	0.676	5	100	Orange
BAC20FNBT	BAC20FNBT-C	2/0	Flag Negative	0.502	0.676	5	100	Orange
BAC30FPBT	BAC30FPBT-C	3/0	Flag Positive	0.530	0.730	5	100	Purple
BAC30FNBT	BAC30FNBT-C	3/0	Flag Negative	0.530	0.730	5	100	Purple
BAC40FPBT	BAC40FPBT-C	4/0	Flag Positive	0.600	0.844	5	100	Yellow
BAC40FNBT	BAC40FNBT-C	4/0	Flag Negative	0.600	0.844	5	100	Yellow

Diagram



## Heavy-duty battery connectors and tools



**Material** – High-conductivity copper

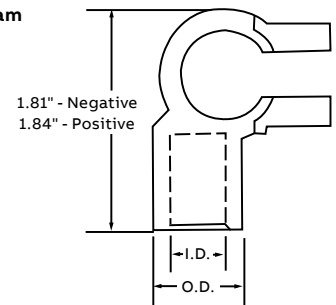
**Finish** – Electro tin plated

**Installing tools** – TBM5-SV, TBM5V

### Tin-plated elbow battery connectors

Cat. no.	Bulk cat. no.	SAE cable size (gauge)	Description	I.D. (in.)	O.D. (in.)	Pkg. qty.	Bulk pkg. qty.	Colour code
BAC10ERNBT	BAC10ERNBT-C	1/0	Right Elbow-Negative	0.455	0.625	5	100	Black
BAC10ERPBT	BAC10ERPBT-C	1/0	Right Elbow-Positive	0.455	0.625	5	100	Orange
BAC20ERNBT	BAC20ERNBT-C	2/0	Right Elbow-Negative	0.502	0.676	5	100	Purple
BAC20ERPBT	BAC20ERPBT-C	2/0	Right Elbow-Positive	0.502	0.676	5	100	Yellow
BAC30ERNBT	BAC30ERNBT-C	3/0	Right Elbow-Negative	0.530	0.730	5	100	Black
BAC30ERPBT	BAC30ERPBT-C	3/0	Right Elbow-Positive	0.530	0.730	5	100	Orange
BAC40ERNBT	BAC40ERNBT-C	4/0	Right Elbow-Negative	0.600	0.844	5	100	Purple
BAC40ERPBT	BAC40ERPBT-C	4/0	Right Elbow-Positive	0.600	0.844	5	100	Yellow
BAC10ELNBT	BAC10ELNBT-C	1/0	Left Elbow-Negative	0.455	0.625	5	100	Black
BAC10ELPBT	BAC10ELPBT-C	1/0	Left Elbow-Positive	0.455	0.625	5	100	Orange
BAC20ELNBT	BAC20ELNBT-C	2/0	Left Elbow-Negative	0.502	0.676	5	100	Purple
BAC20ELPBT	BAC20ELPBT-C	2/0	Left Elbow-Positive	0.502	0.676	5	100	Yellow
BAC30ELNBT	BAC30ELNBT-C	3/0	Left Elbow-Negative	0.530	0.730	5	100	Black
BAC30ELPBT	BAC30ELPBT-C	3/0	Left Elbow-Positive	0.530	0.730	5	100	Orange
BAC40ELNBT	BAC40ELNBT-C	4/0	Left Elbow-Negative	0.600	0.844	5	100	Purple
BAC40ELPBT	BAC40ELPBT-C	4/0	Left Elbow-Positive	0.600	0.844	5	100	Yellow

Diagram



## Heavy-duty battery connectors and tools

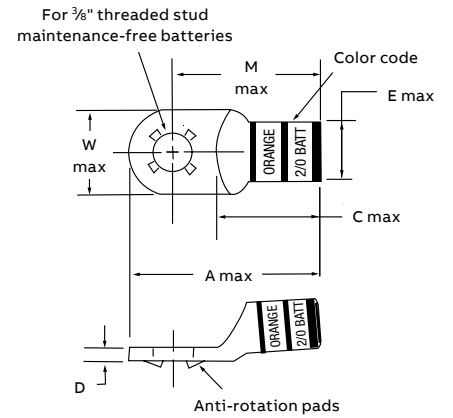


**Material** – High-conductivity copper  
**Finish** – Lead-plated  
**Installing tools** – TBM5-SV or TBM5V

### Stackable battery connectors – Lead-plated

Cat. no.	Bulk cat. no.	SAE cable size (gauge)	Dimensions in. (mm)					Stud size (in.)	Pkg. qty.	Bulk pkg. qty.	Colour code
			A ±0.040	M ±0.020	W ±0.020	C ±0.020	E ±0.010				
BAC438	273-31853-1	4	1.46 (37.0)	1.14 (29.0)	0.62 (15.6)	0.75 (19.1)	0.37 (9.3)	3/8	10	100	Grey
BAC238	273-31853-2	2	1.78 (45.1)	1.40 (35.6)	0.68 (17.1)	0.85 (21.6)	0.47 (11.9)	3/8	10	100	Green
BAC138	273-31853-3	1	1.88 (47.6)	1.50 (38.1)	0.75 (44.5)	0.95 (24.1)	0.52 (13.2)	3/8	10	100	Pink
BAC1038	273-31853-4	1/0	1.93 (48.9)	1.55 (39.4)	0.83 (21.0)	1.00 (25.4)	0.57 (14.5)	3/8	10	100	Black
BAC2038	273-31853-5	2/0	2.11 (53.6)	1.65 (41.8)	0.93 (23.6)	1.10 (27.9)	0.63 (16.1)	3/8	10	100	Orange
BAC3038	273-31853-6	3/0	2.03 (51.4)	1.65 (41.9)	1.03 (26.0)	1.10 (27.9)	0.70 (17.8)	3/8	10	100	Purple
BAC4038	273-31853-7	4/0	2.23 (57.8)	1.90 (48.3)	1.03 (26.0)	1.35 (34.3)	0.77 (19.5)	3/8	10	100	Yellow

Diagram



## Heavy-duty battery connectors and tools



**Material** – High-conductivity copper

**Finish** – Electro tin plated

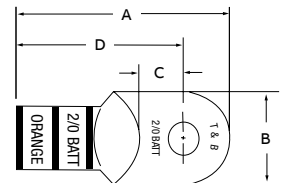
**Installing tools** – TBM5-SV or TBM5V



### Starter lugs – Tin-plated

Cat. no.	Bulk cat. no.	SAE cable size (gauge)	Stud size (in.)	Dimensions (mm)				Pkg. qty.	Bulk pkg. qty.	Colour code
				A ±0.04	B ±0.02	C ±0.02	D ±0.02			
BAL414	273-31852-1	4	¼	140	52	40	115	10	100	Grey
BAL4516	273-31852-2	4	¼	145	61	363	114	10	100	Green
BAL438	273-31852-3	4	¾	145	61	6	114	10	100	
BAL2516	–	2	¼	159	69	40	1258	10	–	
BAL238	273-31852-4	2	¾	178	67	55	140	10	100	Pink
BAL212	273-31852-5	2	½	177	76	54	140	10	100	
BAL1516	–	1	¼	183	76	49	150	10	–	Black
BAL138	273-31852-6	1	¾	185	75	55	150	10	100	
BAL112	273-31852-7	1	½	220	75	75	170	10	100	
BAL10516	–	1/0	¼	192	83	50	150	10	–	Orange
BAL1038	273-31852-8	1/0	¾	193	83	55	155	10	100	
BAL1012	273-31852-9	1/0	½	197	88	53	153	10	100	
BAL20516	–	2/0	¼	206	93	50	160	10	–	Purple
BAL2038	273-31852-10	2/0	¾	211	93	55	165	10	100	
BAL2012	273-31852-11	2/0	½	211	93	55	165	10	100	
BAL30516	–	3/0	¼	216	103	55	165	10	–	Yellow
BAL3038	273-31852-12	3/0	¾	203	103	55	165	10	100	
BAL3012	273-31852-13	3/0	½	235	103	75	185	10	100	
BAL40516	–	4/0	¼	240	113	59	184	10	–	Yellow
BAL4038	273-31852-14	4/0	¾	228	112	55	190	10	100	
BAL4012	273-31852-15	4/0	½	260	112	75	210	10	100	

Diagram



## Heavy-duty battery connectors and tools



**Material** – High-conductivity copper

**Finish** – Electro tin plated

**Installing tools** – TBM5-SV or TBM5V

### Splices (two-way connectors)

Cat. no.	Bulk cat. no.	SAE cable size (gauge)	Pkg. qty.	Bulk pkg. qty.	Colour code
BAS4	273-31852-16	4	10	100	Grey
BAS2	273-31852-17	2	10	100	Green
BAS1	273-31852-18	1	10	100	Pink
BAS10	273-31852-19	1/0	10	100	Black
BAS20	273-31852-20	2/0	10	100	Orange
BAS30	273-31852-21	3/0	10	100	Purple
BAS40	273-31852-22	4/0	10	100	Yellow



**Material** – High-conductivity copper

**Finish** – Electro tin plated

**Installing tools** – TBM5-SV or TBM5V

**Insulating cover** – AC5X3

### “Y” splices

Cat. no.	Strip cable size	SAE cable size (gauge)	Length (in.)	Colour code
BASY20	2/0-(2) #2	2/0	¾	Orange
BASY30	3/0-(2) #1	3/0	¾	Purple
BASY40	4/0-(2) 1/0	4/0	¾	Yellow

## Heavy-duty battery connectors and tools

Abrasion-resistant and engineered for optimum performance at both high and low temperatures



### Battery/starter cables

- Fine flexible copper rope stranding PVC jacket conforms to SAE J1127 specifications
- Layer of paper separates insulation from copper, providing easy stripping with no stranding damage
- Temperature-rated for 80 °C
- Flexibility ideal for tight spaces and cold environments
- Color-Keyed markings for fast and accurate identification
- Marked in 1-ft. increments for easy measurement
- Available in red or black jacket colour

**Material** – High-conductivity copper

**Finish** – Electro tin plated

**Installing tools** – TBM5-SV or TBM5V

### Battery/starter cables

Cat. no.	SAE cable size (gauge)	Cable length (ft.)	Cable colour
BC4-100	4	100	Black
BC2-100	2	100	Black
BC1-100	1	100	Black
BC10-100	1/0	100	Black
BC20-100	2/0	100	Black
BC30-100	3/0	100	Black
BC40-100	4/0	100	Black
BC4-1000	4	1,000	Black
BC2-500	2	500	Black
BC1-500	1	500	Black
BC10-500	1/0	500	Black
BC20-500	2/0	500	Black
BC30-500	3/0	500	Black
BC40-500	4/0	500	Black
BC4-1000R	4	1,000	Red
BC2-500R	2	500	Red
BC1-500R	1	500	Red
BC10-500R	1/0	500	Red
BC20-500R	2/0	500	Red
BC30-500R	3/0	500	Red
BC40-500R	4/0	500	Red

Cat. no.	SAE cable size (gauge)	Cable length (ft.)	Cable colour
BC4-25	4	25	Black
BC2-25	2	25	Black
BC1-25	1	25	Black
BC10-25	1/0	25	Black
BC20-25	2/0	25	Black
BC30-25	3/0	25	Black
BC40-25	4/0	25	Black
BC4-25R	4	25	Red
BC2-25R	2	25	Red
BC1-25R	1	25	Red
BC10-25R	1/0	25	Red
BC20-25R	2/0	25	Red
BC30-25R	3/0	25	Red
BC40-25R	4/0	25	Red

## Heavy-duty battery cable

Specially designed for demanding industrial and OEM requirements



- 105 °C Temperature-rated and UL recognized
- Heavier PVC jacket conforms to SAE J1127 specifications
- Color-Keyed markings for fast and accurate identification
- Marked in 1-ft. increments for easy measurement

- Layer of paper separates insulation from copper for easy stripping with no strand damage
- 600 V rated available in bulk only
- Application-specific – To order, contact your regional sales offices

## Heavy-duty battery connectors and tools



BCT840, BCT840S



TBM5SV, TBM5V

### **BCT840, BCT840S:**

- Adjustable die crimping tools for Color-Keyed cast and tubular connectors
- The single die is an integral part of the tool; no dies to lose or misplace
- Available with Shure Stake mechanism to ensure a complete crimp every time (BCT840S)
- Crimp casting and tubular connectors ranging from #4 to 4/0 AWG

### **TBM5SV, TBM5V:**

- Heavy-duty crimping tool including dies for #8–4/0 AWG battery connectors, lugs and splices
- Available with Shure Stake mechanism to ensure a complete crimp every time (TBM5S)

### **Crimping tools**

Cat. no.	Description	Pkg. qty.
BCT840	Dieless crimp tool for cast and tubular battery connectors	1
BCT840S	Dieless crimp tool with Shure-Stake mechanism for cast and tubular battery connectors	1
TBM5V	Ratchet crimp tool with die for #8 to 4/0 AWG battery connectors	1
TBM5-SV	Ratchet crimp tool with Shure-Stake mechanism and die for #8 to 4/0 AWG battery connectors	1



- Cuts cable up to 500 kcmil
- Fiberglass handles and carbon steel blades
- For copper and aluminum cable only

### **Cable cutter**

Cat. no.	Description	Pkg. qty.
364RF	Cutter for up to 500 kcmil copper and aluminum	1

Contact Tool Service for replacement blades.



### **Cable stripper**

Cat. no.	Description	Pkg. qty.
BCS8-40	Cable stripper for #8 to 4/0 AWG battery cable with replacement blade provided in the handle	1