

Cast copper bus taps for copper conductors

Clamps onto bus bar — no drilling required



Heavy-duty bus bar taps – certified to 600 V and recommended up to 35 kV^v applications

Material – High-conductivity cast copper alloy

Finish – Electro tin plated

Contact material – Beryllium copper

- For bus bars up to ¼ in. thick, 3–6 in. wide and code copper cable
- Take up less than 1¼ in. of bus bar space
- Convex shape of connector tongue exerts great contact pressure on bus bar
- Install with hydraulic tools and hex crimp dies

Heavy-duty bus bar taps – Certified to 600 V and recommended up to 35 kV^v applications

Cat. no.	Wire size (AWG or kcmil)		Fig. no.	Busbar width	Dimensions in. (mm)			Die code
	Code cable	Flex			A	B	C	
251-31446-1	1/0	225/24	1	3	6.12 (155.4)	2.28 (57.9)	3.50 (88.9)	66H
251-31446-7	1/0	225/24	1	4	7.12 (180.8)	2.28 (57.9)	4.50 (114.3)	66H
251-31446-13	1/0	225/24	2	5 or 6	9.12 (231.6)	2.28 (57.9)	6.38 (162.1)	66H
251-31446-8	2/0	1/0, 275/24	1	4	7.12 (180.8)	2.28 (57.9)	4.50 (114.3)	66H
251-31446-14	2/0	1/0, 275/24	2	5 or 6	9.12 (231.6)	2.28 (57.9)	6.38 (162.1)	66H
251-31446-23	4/0	450/24	1	3	6.12 (155.4)	2.28 (57.9)	3.50 (88.9)	66H
251-31446-22	4/0	450/24	1	4	7.12 (180.8)	2.28 (57.9)	4.50 (114.3)	66H
251-31446-19	4/0	450/24	2	6	9.12 (231.6)	2.28 (57.9)	6.44 (163.6)	66H
251-31446-29	250	4/0, 550/24	1	3	5.68 (144.3)	2.28 (57.9)	3.38 (85.9)	66H
251-31446-30	250	4/0, 550/24	1	4	7.12 (180.8)	2.28 (57.9)	4.50 (114.3)	66H
251-31446-31	250	4/0, 550/24	1	5 or 6	9.12 (231.6)	2.28 (57.9)	6.38 (162.1)	66H
251-31446-3	350	–	1	3	6.63 (168.4)	2.56 (65.0)	3.50 (88.9)	99H
251-31446-9	350	–	1	4	7.63 (193.8)	2.56 (65.0)	4.50 (114.3)	99H
251-31446-15	350	–	2	5 or 6	9.63 (244.6)	2.56 (65.0)	6.38 (162.1)	99H
251-31446-4	500	350, 925/24	1	3	6.63 (168.4)	2.56 (65.0)	3.50 (88.9)	99H
251-31446-10	500	350, 925/24	1	4	7.63 (193.8)	2.56 (65.0)	4.50 (114.3)	99H
251-31446-16	500	350, 925/24	2	5 or 6	9.63 (244.6)	2.56 (65.0)	6.38 (162.1)	99H
251-31446-17	600	–	2	5 or 6	9.75 (247.7)	2.75 (69.9)	6.38 (162.1)	112H
251-31446-21	700	–	1	6	9.75 (247.7)	2.75 (69.9)	6.44 (163.6)	112H
251-31446-6	750	500, 1,325/24	1	3	6.75 (171.5)	2.75 (69.9)	3.50 (88.9)	112H
251-31446-12	750	500, 1,325/24	2	4	7.75 (196.6)	2.75 (69.9)	4.50 (114.3)	112H
251-31446-18	750	500, 1,325/24	2	5 or 6	9.75 (247.7)	2.75 (69.9)	6.38 (162.1)	112H
251-31446-36	–	750, 1,925/24	2	5 or 6	9.75 (247.7)	2.75 (69.9)	6.44 (163.6)	112H

Diagrams

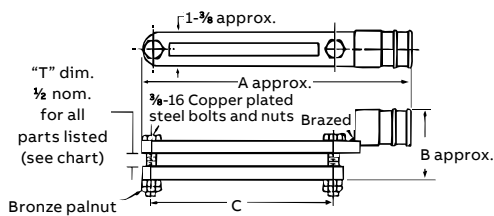


Figure 1

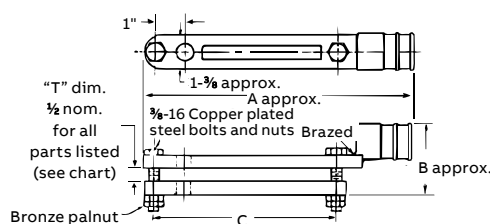
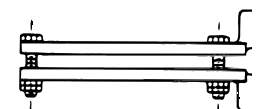


Figure 2



Double cable—Use AD suffix

Styles shown have cable tap on one portion of clamp assembly. Clamp assemblies with cable taps on both portions (top and bottom identical) are also available.

These assemblies are identified by adding suffix "AD" to catalogue numbers shown (example: 251-31446-1AD).

Only one hydraulic tools with hex crimp dies TBM12.

* For installations from 16 kV up to 35 kV, consult shielded cable manufacturers for stress relief and insulation requirements.

For tool and die selection charts, see the section E31-E48 of the Tools, Dies and Kits catalogue.