


Red Dot Weatherproof products

FS and FD metallic covers


Single-gang horizontal covers (cast aluminum)

	Cat. no.	Description	Std. ctn.
	CCD-FS	Grey – box mount (zinc)	50

	CFSH-G	One GFCI receptacle – box mount	25
---	--------	---------------------------------	----

	CWPDR-FS	One duplex receptacle – box mount	25
---	----------	-----------------------------------	----

Single-gang horizontal covers (cast aluminum)

	Cat. no.	Description	Nominal size (in.)	Max. device face dia.	Std. ctn.
	CFSR-L	Single receptacle – box mount	1 ³ / ₁₆	1.600	25

*Gasket and screws included.

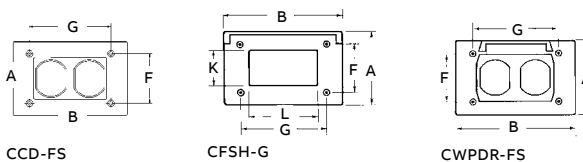
Single-gang (cast aluminum)

	Cat. no.	Description	Std. ctn.
	CFSB	Blank, box mount	100


Single-gang horizontal covers (cast aluminum)

Cat. no.	A	B	F	G	K	L
CCD-FS	2 ¹³ / ₁₆	4 ⁹ / ₁₆	1 ⁷ / ₈	3 ¹ / ₄	–	–
CFSH-G	2 ¹³ / ₁₆	4 ⁹ / ₁₆	1 ⁷ / ₈	3 ¹ / ₄	1 ¹¹ / ₃₂	2 ²¹ / ₃₂
CWPDR-FS	2 ¹³ / ₁₆	4 ⁹ / ₁₆	1 ⁷ / ₈	3 ¹ / ₄	–	–

Diagrams



Single-gang vertical covers (cast aluminum)

	Cat. no.	Description	Std. ctn.
	CFSR-G	One GFCI receptacle – box mount	25

Red Dot Weatherproof products

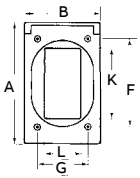
FS and FD metallic covers

Single-gang vertical covers (cast aluminum)



Cat. no.	A	B	F	G	K	L
CFSR-G	4 ⁹ / ₁₆	2 ¹³ / ₁₆	3 ³ / ₄	1 ⁷ / ₈	2 ² / ₃₂	1 ¹¹ / ₃₂

Diagram



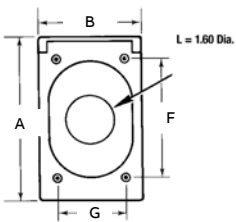
CFSR-G

Single-gang vertical covers (cast aluminum)



Cat. no.	A	B	F	G
CFSR-L	4 ⁹ / ₁₆	2 ¹³ / ₁₆	3 ³ / ₄	1 ⁷ / ₈

Diagram



CFSR Series*

*Gasket and screws included.

Red Dot Weatherproof products

Deck grommet and stainless steel box and cover



—
Nonmetallic deck grommet

Cat. no.	Finish
DKG-CA	Black

All supplied receptacles are tamper-resistant



- 37.3 cu. in. capacity
- 316 stainless steel construction
- NEMA 3R rated
- NEMA 4X rated while not in use when properly installed
- NSF certified
- cULus Listed

—
Stainless steel while-in-use box and cover system



Cat. no.	Description	Std. ctn.
SSE	Stainless steel while-in-use box and cover system	1